

WAGATE®

WaGate Flap Valve

KVF NPS 28"-47"
With wall flange

Use

Used as flood protection and emergency shutdown.
For mounting on outlet pipes in ducting or from pump station. For stormwater and wastewater.

- For mounting against a flat surface
- Can be fitted below the water surface
- The flap has a 15 degree inclination
- Corrosion-proof materials
- UV-resistant

Material

Valve pipe: PE 100
Flap: PEHD
Hinge: EP 400/3-3+1,5 LD rubber
Wall seal: EPDM
Steel: EN 1.4404
Wall flange: PEHD

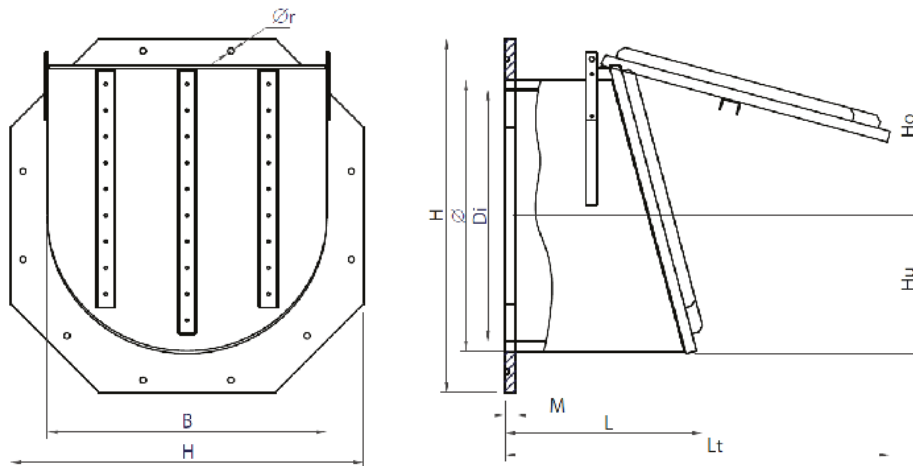


Accessory

Flange according to DIN standard.
Chain for easy maintenance.

Technical data

Waterproof for one-sided water pressure
Max pressure: 0,5 psi
Temperature: -50°C - +80°C



Dimensions [In] and weight [lbs]

NPS	Ø	H	Di	B	M	L	Lt	Ør	Weight	Pipe type
28	28	39,4	655,6	29,1	1,6	22,8	41,7	12xØ20	161	SDR 26
32	32	39,4	738,8	32,7	1,6	24,6	47	12xØ20	205	SDR 26
35	35	47,2	831,2	36,6	1,6	27,2	50,1	12xØ20	269	SDR 26
39	39	51,2	923,6	40,5	1,6	28,7	56,3	12xØ22	364	SDR 26
47	47	59,1	1108,2	49	1,6	32,9	69,3	12xØ22	474	SDR 26

Other dimensions on request.
The right to design changes is reserved.

150 North Michigan Ave
Chicago, IL 60601
+1 888-927-8677

WAPRO®