

WaGate Flap Valve

KVF NPS 4"-6"
With wall flange

Use

Used as a flood protection and emergency shutdown. Mounted on outlet pipes in duct or from pump station. For stormwater and wastewater pipes.

- Mounted against a flat surface
- Can be mounted below the water surface
- Corrosion-proof materials
- UV-resistant

Materials

Pipe for non-return flap: PE 100
Flap and hinge: EN 1.4404
Seal with flap: EPDM
Steel: EN 1.4404
Wall flange: PEHD

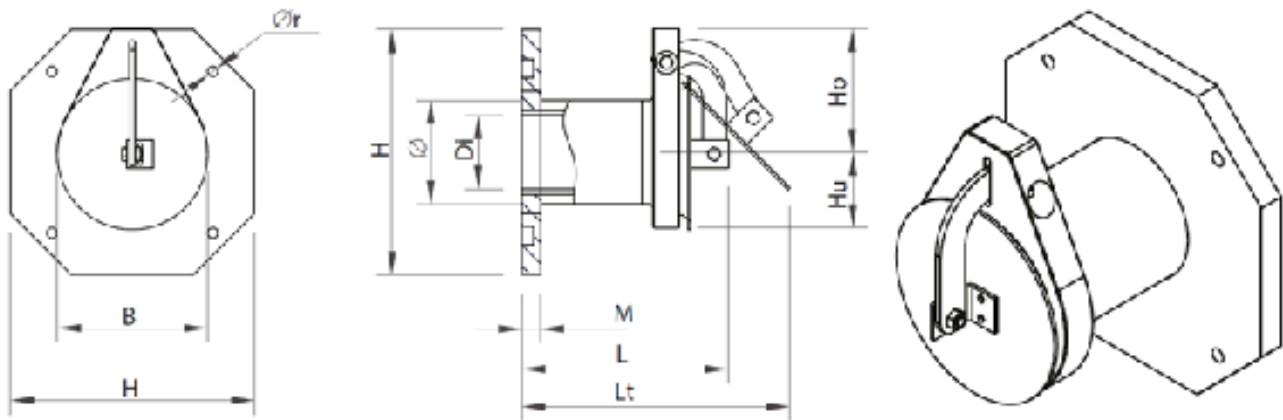


Asseccory

Flange according to DIN standard.
Chain for easy maintenance.

Technical data

Waterproof for monolateral fluid pressure
Max tryck: 0,5 psi
Temperature: -50°C - +80°C



Dimensions [in] and weight [lbs]

NPS	Ø	H	Di	B	M	L	Lt	Ø R	Weight	Pipe type
4	4	10,2	4	6,3	0,8	8,7	13	8xø11	3,3	SDR 26
5	5	10,6	4,5	7,1	1,2	8,7	13,4	8xø11	4,4	SDR 26
6	6	12,8	5,8	7,9	1,2	9,1	13,8	8xø11	6,6	SDR 26

Other dimensions depending on purpose.
The right to design changels is reserved.

150 North Michigan Ave
Chicago, IL 60601
+1 888-927-8677