

## WaGate Sluice Gate

SPS-TG NPS 8" - 24"

Sealed for one-sided pressure

### Use

Used for regulating or shutting down flow for wastewater, stormwater, process water and sludge. For use in industrial facilities, agriculture and aquaculture.

- Compact unit, self-supporting frame design.
- Non-rising spindle
- Operated manually. Can be customised with electric, pneumatic or hydraulic actuators.
- Can be customised with pipe pup piece for penetration through well wall
- Also available with domed flange



### Material

Frame: EN 1.4404 ( EN 1.4462)

Louved gate: EN 1.4404 ( EN 1.4462)

Spindle: EN 1.4571, (EN 1.4462)

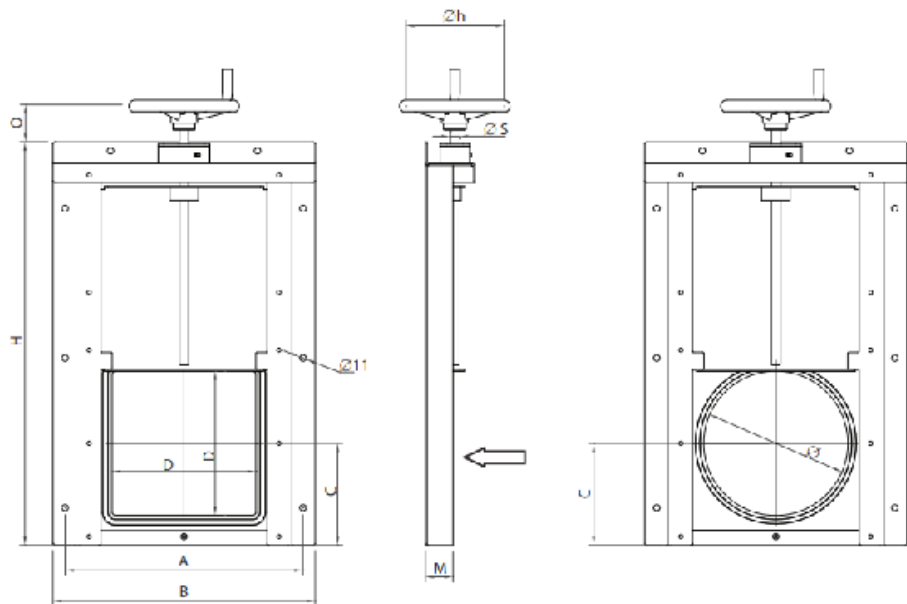
Spindle nut: Zinc-free bronze

Facing louvred gate: EPDM

Seal according to: DIN 19569-4

### Accessory

Seal with wall: EPDM cellular rubber



### Dimensions [in] and weight [lbs]

NPS	D	Ø	A	B	C	H	M	O	Øs	Øh	Weight	mWc
8	8x8	7,87	14,33	15,98	5,98	23,62	1,9	2,48	0,71	7,87	28,7	4
10	10x10	9,84	16,30	17,95	6,97	27,56	1,9	3,07	0,71	9,84	35,3	4
12	12x12	12,40	18,86	20,51	8,27	31,69	1,9	2,28	0,71	9,84	41,9	4
16	16x16	15,75	22,20	23,86	9,92	39,37	1,9	3,07	0,71	11,81	55,1	4
20	20x20	19,69	26,14	27,80	11,89	47,24	1,9	3,11	0,87	11,81	72,8	3
24	24x24	24,80	31,26	32,91	14,37	56,81	1,9	3,82	0,87	13,78	88,2	3