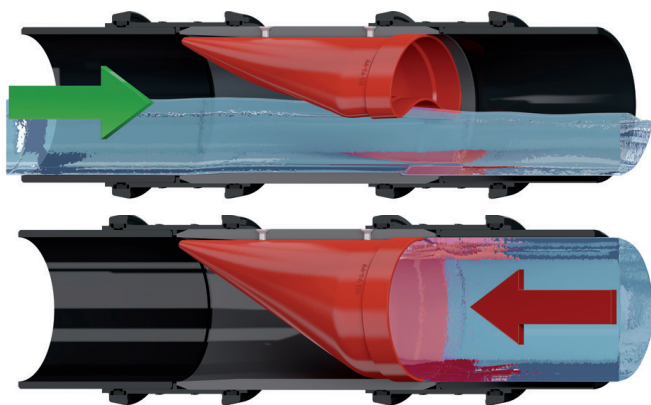


## WASTOP® INLINE CHECK VALVE



We all know someone who has been affected by it. We see it, feel it and experience it. Climate change and rising sea levels are affecting us all. Through the innovation of WaStop Inline Check Valve, we at Wapro have prevented thousands of floods worldwide.

In order to protect against flooding, we at Wapro have engineered the WaStop to ensure the lowest possible opening pressure whilst maintaining the best possible seal against backflow. This, combined with the lowest headloss available, gives the most efficient flow conditions, ensuring the fastest evacuation of water. An essential quality of check valves used to protect people and property. WaStop protects.

### THE BENEFITS OF WASTOP®

- Easy installation saving on construction & installation costs
- Superior construction materials
- Lowest headloss amongst inline check valves
- Low life cycle cost
- No moving parts - virtually maintenance-free
- Many dimensions 3" - 80" std & non-standard pipes
- Stops liquids, gases, odors, insects and small animals
- Stops backflow effectively even in low flow events

### APPLICATIONS - WASTE WATER, SURFACE WATER, TIDAL AREAS

We at Wapro know that any solution for flood prevention or odor control needs to function. Simply, effectively. That's why, when we invented the WaStop inline check valve in 2000 we had one thought in mind. Instant automatic protection. Working on differential pressure the WaStop functions autonomously, without human interaction, without electricity, without constant maintenance. It just works.

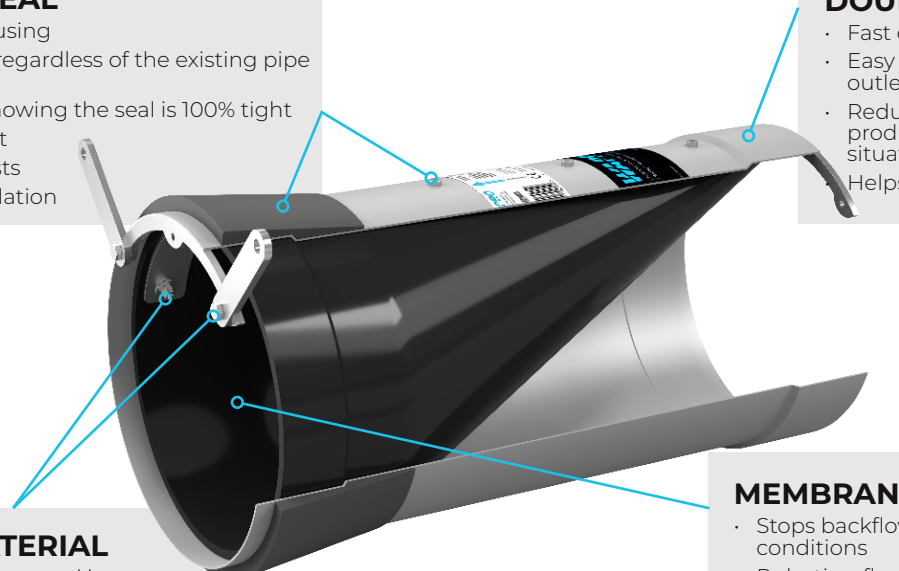
To invent the best inline check valve on the market our engineers went one step further. We also thought about the different parts of the process and who would be affected by the design of the valve. With function at the forefront of their minds, our engineers developed a valve that works in stormwater, sewer, odor applications, as well as ensuring coverage of existing pipes sizes to enable retro-fitting with ease. We cover all sizes of pipes, all shapes, from 3" - 80". As standard. Off the shelf in most cases, for fast delivery. We keep a stock to ensure the contractor and end user can keep time and costs to a minimum.





## BENEFITS OF SUPERIOR CONSTRUCTION

WaStop is designed to provide asset and property owners' peace of mind. Simply the most reliable, high quality inline check valve in existence.



**HOUSING & SEAL**

- Thin stainless housing
- Perfect function regardless of the existing pipe quality
- Peace of mind knowing the seal is 100% tight
- Low life-cycle cost
- Lower energy costs
- Quick, easy installation

**DOUBLE COLLARS**

- Fast deliveries
- Easy installation for inlet or outlet installation
- Reduces costs by having one product for multiple installations situations
- Helps you meet your budget

**FIXATION MATERIAL**

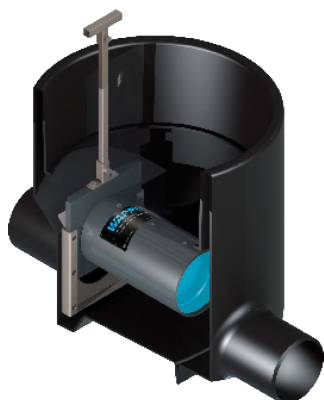
- Long life expectancy and low life-cycle cost with high quality materials
- Peace of mind - engineered product that exceeds expectations

**MEMBRANE**

- Stops backflow effectively even in low flow conditions
- Pulsating flow reduces sedimentation up and downstream
- Extremely low headloss
- Low maintenance costs
- Memory membrane - doesn't sag

## THE VERSATILITY OF WASTOP®

			
<b>INLINEINSTALLATION</b>	<b>CHAMBERINSTALLATION</b>	<b>OUTLETINSTALLATION</b>	<b>FLANGEINSTALLATION</b>



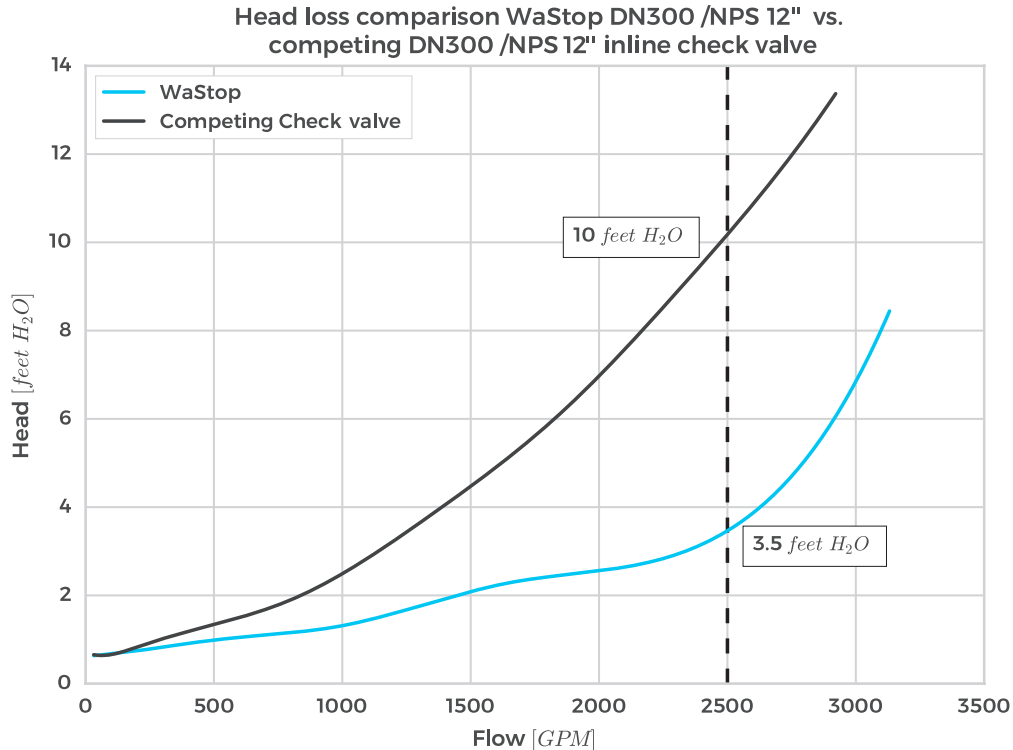
## WASTOP® PRE-INSTALLED IN AN ACCESS CHAMBER

The WaAccess Chamber provides you with peace of mind. Once installed the WaAccess chamber provides complete protection against backflow in the sewer or combined sewer network. One ingenious product protects your basement or property from flooding caused by an overload or surcharge in the sewer system.

- Easy access from ground level
- Easy to inspect - simply lift manhole cover and pull up the WaStop module
- Delivered complete - inspection chamber and check valve in one

## LOW HEAD LOSS IS ESSENTIAL

Comparing head loss data is difficult as the test procedure is rarely presented and there are multiple ways of altering data. However, the test results shown below were conducted in the same facility with the same reference points etc. are comparable. The test result shows that the **WaStop has 65% lower head loss** than a competing inline check valve at flow 2500 GPM. Both valves were tested in the same open air scenario.

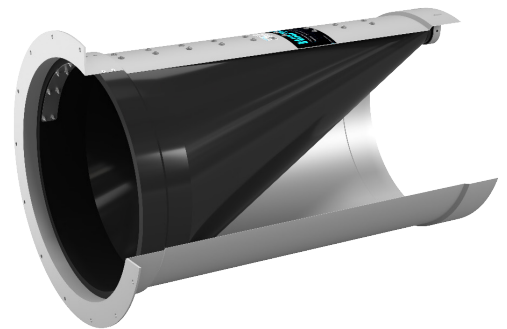


## THE WIDEST RANGE OF SIZES TO SUIT ALL PIPES

We at Wapro know that there is a wide range of pipes available on the market, and that these pipes aren't always perfect. To ensure the valve we provide to you with fits perfectly and protects 100% we're engineered the guess work out of it.

Keeping in line with our customer promise of common sense and simplicity, we have developed a standard range of WaStop from NPS 3" - 80". On top of this we have a Superior Fit Seal to ensure there is no leakage between the existing pipe and the WaStop Inline Check Valve. We designed this seal to not only create the perfect fit, but also to ensure quick easy installation. Time is money.

All sizes are available in short versions or with flanges and can be customized to suit your needs. All WaStop standard valves are reversible for inlet or outlet installation and are able to be used vertically as well as horizontally.



**WAPRO**

## WASTOP STANDARD RANGE DIMENSIONS

Long life-cycle is part of our DNA. It's part of our values. With this in mind we use the right materials for the right application. Stainless steel AISI 304 (EN1.4301) and AISI 316L (EN1.4404), and PVC/PE, along with a membrane material suited to the application.

### WASTOP STANDARD - 304/316 STAINLESS STEEL

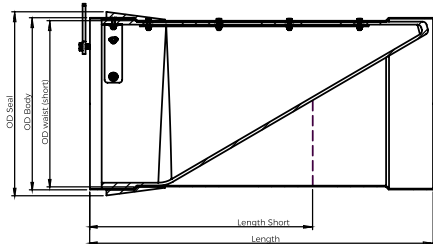
Model*	NPS	Length	Length (Short**)	OD seal	OD body	OD waist (OD Short)	Opening pressure standard***	Closing pressure standard	Weight
	[in]	[in]	[in]	[in]	[in]	[in]	[inH <sup>2</sup> O]	[inH <sup>2</sup> O]	[lbs]
WS97	4	8,3	6,3	4,3	3,8	3,62	7,48	2,76	1,5
WS101	4	8,5	6,5	4,4	3,9	3,78	8,23	2,87	1,8
WS116	5	9,3	6,2	5,0	4,5	4,33	10,63	3,35	2,0
WS146	6	11,8	7,9	12,4	5,7	5,45	9,06	3,19	5,7
WS183	8	15,2	10,6	7,9	7,1	6,81	11,42	3,94	8,8
WS193	8	15,6	10,8	8,3	7,5	7,19	9,65	4,72	8,8
WS215	9	17,7	11,8	9,3	8,5	8,15	7,48	4,49	9,9
WS230	10	17,7	11,8	9,8	9,1	8,74	7,87	4,72	13,2
WS240	10	19,5	13,8	10,2	9,4	9,13	7,56	4,33	15,4
WS265	12	19,5	13,8	11,2	10,4	10,08	7,09	4,72	22,0
WS283	12	23,6	15,7	11,9	11,1	10,83	8,54	4,33	35,3
WS290	12	23,6	15,7	12,2	11,4	11,02	8,66	6,30	37,5
WS340	14	27,6	19,7	13,9	13,4	12,91	12,80	7,68	39,7
WS370	15	28,7	19,7	15,5	14,6	14,09	9,13	6,30	44,1
WS390	16	29,5	19,7	16,3	15,4	14,88	13,19	8,19	52,9
WS440	18	33,1	22,0	18,4	17,4	16,97	8,66	5,71	61,7
WS490	20	35,4	23,6	20,2	19,3	18,66	10,63	7,09	63,9
WS515	21	39,4	25,6	21,2	20,3	19,65	10,43	6,50	83,8
WS590	24	47,2	31,5	23,7	23,1	22,32	13,98	9,65	105,8
WS690	28	51,2	34,3	28,0	27,0	26,26	9,84	6,10	138,9
WS750	30	55,1	37,4	30,3	29,5	28,58	13,58	8,86	165,3
WS790	32	59,1	39,4	31,9	31,1	30,16	13,39	9,06	194,0
WS885	36	66,9	-	36,0	34,8	33,66	16,14	10,63	255,7
WS985	40	70,9	-	40,0	38,8	-	15,94	10,43	310,9
WS1040	42	78,7	-	-	40,9	-	13,78	8,66	487,2
WS1185	48	88,6	-	-	46,7	-	17,32	11,22	639,3
WS1385	56	102,4	-	-	54,5	-	21,26	13,58	970,0
WS1485	60	110,2	-	-	58,5	-	24,80	15,16	1415,4
WS1585	64	118,1	-	-	62,4	-	20,08	12,40	154,3
WS1785	72	122,1	-	-	70,3	-	25,79	16,54	2028,3
WS1980	80	133,9	-	-	78,0	-	29,33	18,90	2866,0

\*We have a standard set of sizes which can be customized, easily, to suit any application. Flanges on inlet, outlet or somewhere in between are all easily available. Quickly. \*\*Customized extra short valves are available. \*\*\* Open air. Standard membrane. Lower and higher opening pressures available.

### WASTOP STANDARD - PVC/PE

Model	NPS	L	OD body	Opening pressure standard	Closing pressure standard	Weight
	[in]	[in]	[in]	[inH <sup>2</sup> O]	[inH <sup>2</sup> O]	[lbs]
WS75PVC	3	4.9	3,0	9,8	4,1	0,7
WS110PVC	4	8.3	4,3	8,5	3,1	1,5
WS125PVC	5	9.4	4,9	9,6	3,3	2,0
WS160PVC	6	12.2	6,3	10,4	3,3	4,4
WS200PVC	8	15.7	7,9	9,4	4,3	8,2
WS250PE	10	18.9	9,8	7,5	3,9	13,9
WS250PE-I	10	18.9	9,8	7,5	3,9	13,9
WS315PE	12	23.6	12,4	8,3	4,7	24,3
WS315PE-I	12	23.6	12,4	8,3	4,7	24,3

#### WASTOP STANDARD - STAINLESS



#### WASTOP STANDARD - PVC/PE

