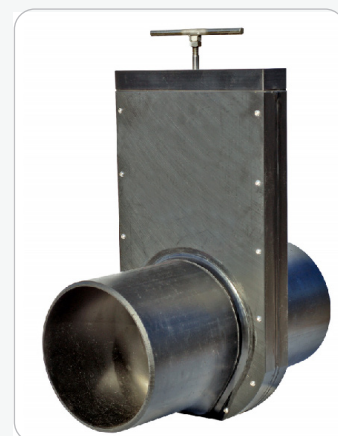


GATE VALVE - SVL DN/OD 110-315

AREA OF USE: Sewer and stormwater, process water and for the fishing and agricultural industry. SVL is for one-sided pressure.

ADVANTAGES WITH WAGATE SVL:

- Manufactured from the highest quality corrosion-resistant material
- Designed with full flow and with a self-cleaning pocket, which ensures complete closure of the valve blade
- Long lifespan. Low operating and maintenance costs
- Simple installation, which reduces costs
- Can be integrated into pipelines or both inside and outside well systems. The valve is suitable for installation in the ground without any form of protection



OPERATION: SVL is an on/off valve for manual operation with a draw rod.

Can be used with electric, pneumatic, or hydraulic actuators.

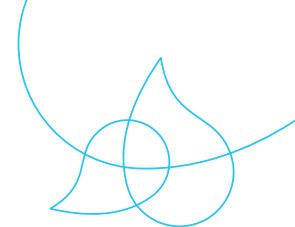
SPECIAL DESIGN: With DIN flange or for mounting on a wall and in a well.

MATERIAL:

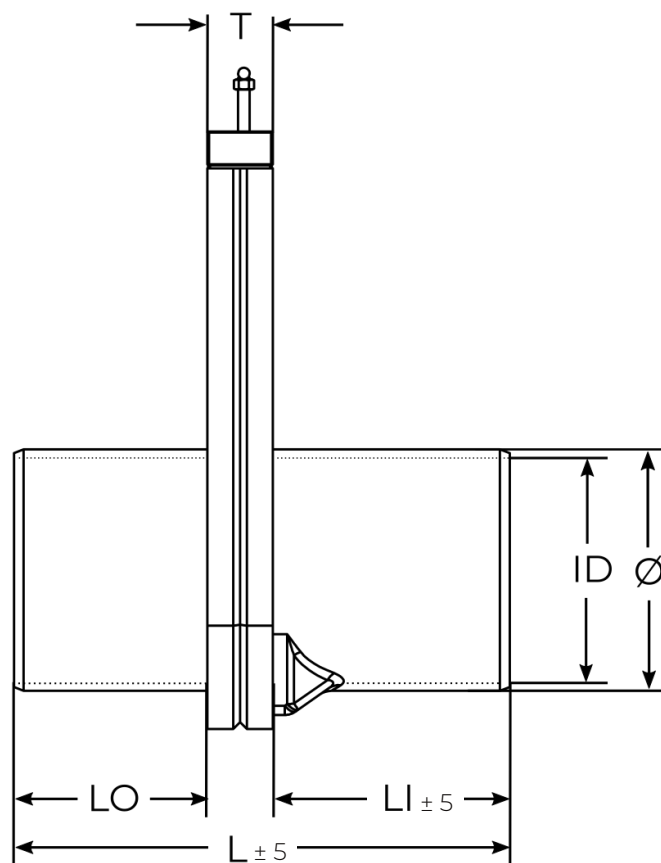
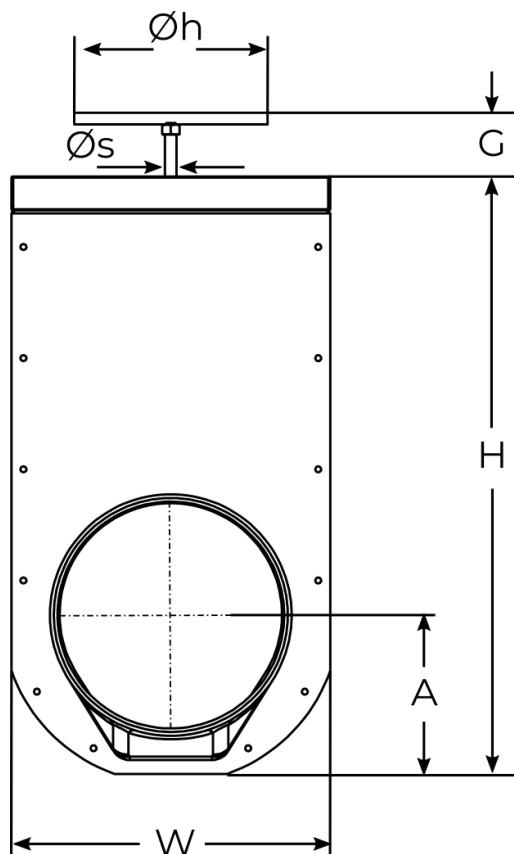
Valve body	PEHD 500
Valve blade and push rod	EN 1.4404, (EN 1.4462)
Valve gasket	EPDM (NBR)
Top gasket	EPDM
Sealing ring	NBR

TECHNICAL DATA:

Maximum pressure	DN/OD 110-160 – 2 bar
	DN/OD 200-315 – 1 bar
Temperature	-50° C - +80° C



GATE VALVE - SVL DN/OD 110-315



DIMENSIONS IN [MM]

DN/OD	Ø	ID	W	H	A	G	ØS	ØH	L	LO	LI	T	WEIGHT[KG]	BAR	PIPE
110	110	96.8	192	342	97	60	12	200	408	140	200	68	4.7	2	SDR 17
125	125	110.2	208	369	103	60	12	200	408	140	200	68	5.7	2	SDR 17
160	160	147.6	243	443	122	60	12	200	418	150	200	68	7.7	2	SDR 26
200	200	184.6	280	518	139	60	12	200	443	175	200	68	9.9	1	SDR 26
250	250	234.6	330	618	164	60	12	200	513	200	245	68	13.3	1	SDR 33
315	315	295.6	395	746	200	60	12	250	668	275	315	78	23.0	1	SDR 33

Other dimensions on request. Reserves the right to changes.