

## GATE VALVE - SVL DN/OD 4-12

**AREA OF USE:** Sewer and stormwater, process water and for the fishing and agricultural industry. SVL is for one-sided pressure.

### ADVANTAGES WITH WAGATE SVL:

- Manufactured from the highest quality corrosion-resistant material
- Designed with full flow and with a self-cleaning pocket, which ensures complete closure of the valve blade
- Long lifespan. Low operating and maintenance costs
- Simple installation, which reduces costs
- Can be integrated into pipelines or both inside and outside well systems. The valve is suitable for installation in the ground without any form of protection



**OPERATION:** SVL is an on/off valve for manual operation with a draw rod.

Can be used with electric, pneumatic, or hydraulic actuators.

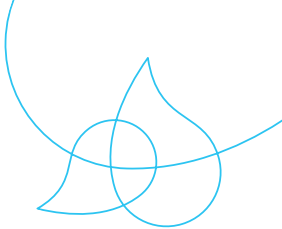
**SPECIAL DESIGN:** With DIN flange or for mounting on a wall and in a well.

### MATERIAL:

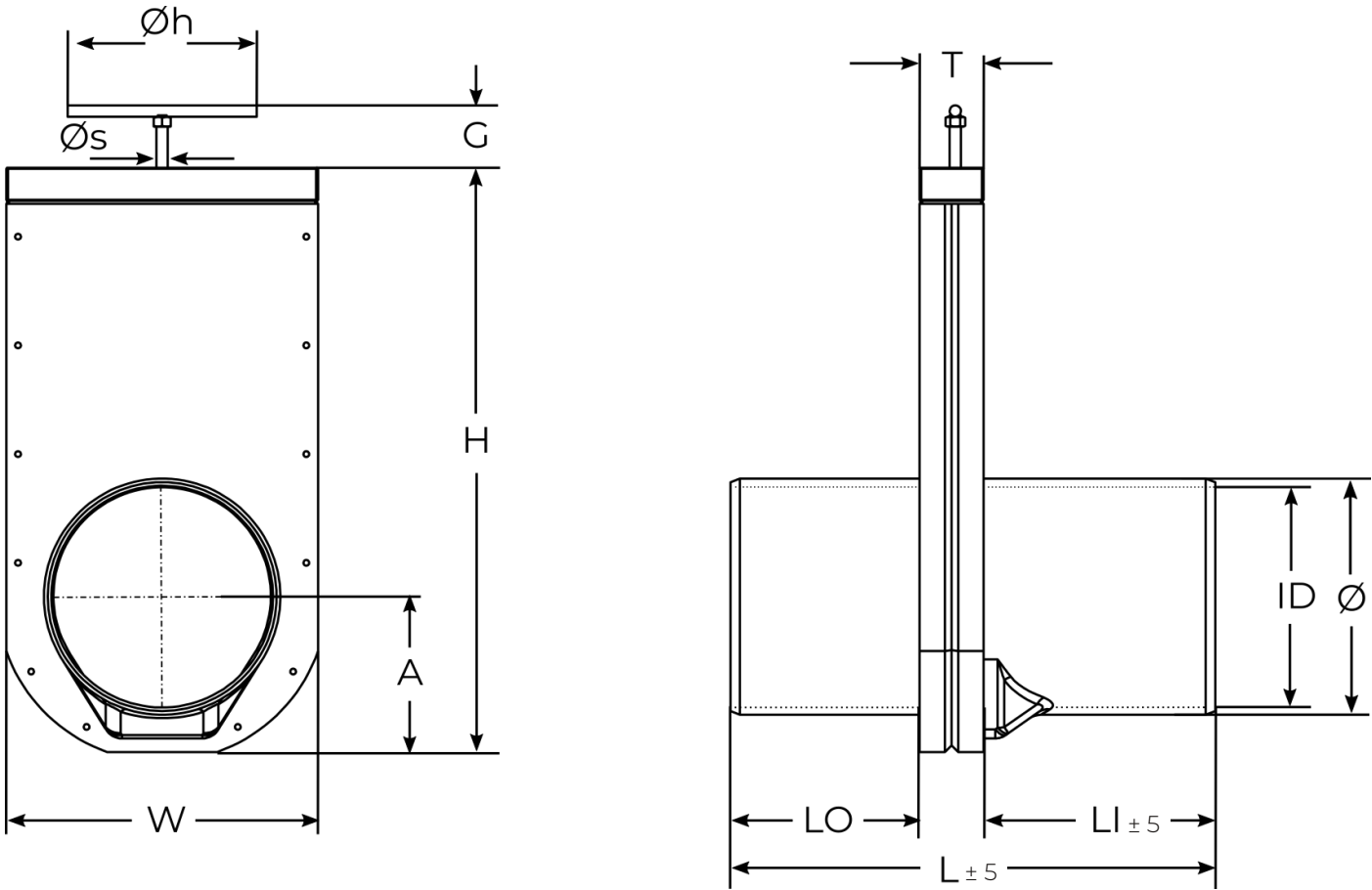
|                          |                        |
|--------------------------|------------------------|
| Valve body               | PEHD 500               |
| Valve blade and push rod | EN 1.4404, (EN 1.4462) |
| Valve gasket             | EPDM (NBR)             |
| Top gasket               | EPDM                   |
| Sealing ring             | NBR                    |

### TECHNICAL DATA:

|                  |                     |
|------------------|---------------------|
| Maximum pressure | NPS/OD 4-6 – 2 bar  |
|                  | NPS/OD 8-12 – 1 bar |
| Temperature:     | -50° C - +80° C     |



## GATE VALVE - SVL DN/OD 4-12



### DIMENSIONS IN [INCHES]

| NPS/OD | Ø   | ID    | W     | H     | A    | G    | ØS   | ØH   | L     | LO    | LI   | T    | WEIGHT [LBS] | PSI | PIPE   |
|--------|-----|-------|-------|-------|------|------|------|------|-------|-------|------|------|--------------|-----|--------|
| 4      | 110 | 3.88  | 7.56  | 13.46 | 3.82 | 2.36 | 0.47 | 7.87 | 16.06 | 5.51  | 7.87 | 2.68 | 10           | 29  | SDR 17 |
| 5      | 125 | 4.34  | 8.19  | 14.53 | 4.06 | 2.36 | 0.47 | 7.87 | 16.06 | 5.51  | 7.87 | 2.68 | 13           | 29  | SDR 17 |
| 6      | 160 | 5.81  | 9.57  | 17.44 | 4.80 | 2.36 | 0.47 | 7.87 | 16.46 | 5.91  | 7.87 | 2.68 | 17           | 29  | SDR 26 |
| 8      | 200 | 7.27  | 11.02 | 20.40 | 5.47 | 2.36 | 0.47 | 7.87 | 17.44 | 6.89  | 7.87 | 2.68 | 22           | 15  | SDR 26 |
| 10     | 250 | 9.24  | 13    | 24.33 | 6.46 | 2.36 | 0.47 | 7.87 | 20.20 | 7.88  | 9.65 | 2.68 | 29           | 15  | SDR 33 |
| 12     | 315 | 11.67 | 11.55 | 29.37 | 7.87 | 2.36 | 0.47 | 9.84 | 26.30 | 10.87 | 12   | 3.07 | 23.0         | 1   | SDR 33 |

Other dimensions on request. Reserves the right to changes.