

## SLUICE GATES

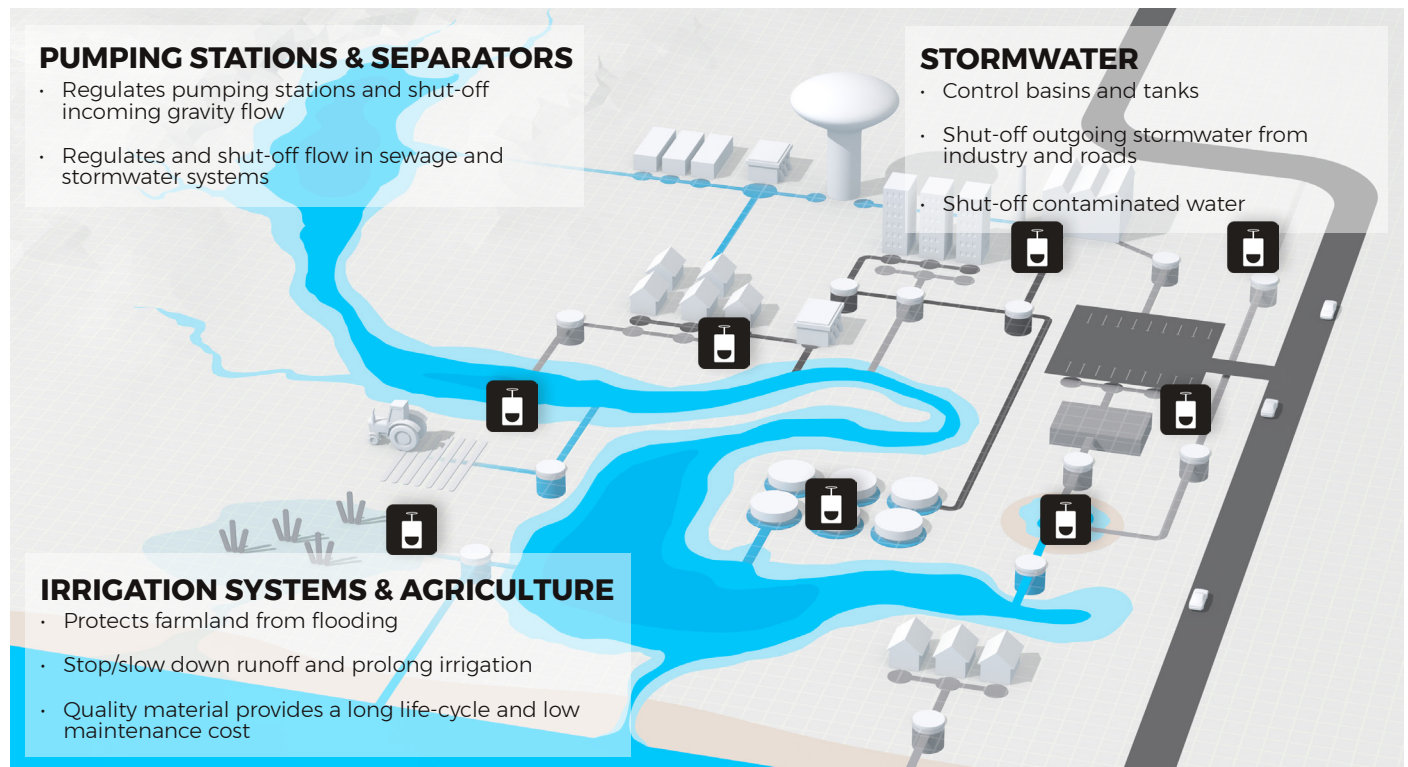
It is devastating if environmentally hazardous substances reach our stormwater, recipients, pastures or water sources. With our solutions you ensure emergency shut-off of roads run-off following an accident or industrial applications. Our solutions can also shut off incoming pipes in pumping stations to facilitate straightforward operational and maintenance work to ensure safety.

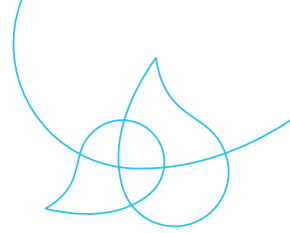
Wapro's core competence is stormwater and wastewater technology, and flow regulation in gravity systems. We offer complete solutions with gate valves, sluice gates, flap valves, shut-off valves, check valves and flow control devices all of which can be adapted to fit existing or new systems.

Our WaGate product range consists of gate valves, sluice gates and flap valves for flow control with corrosion free and non-polluting HDPE, EPDM and stainless steel. The valves can be customized with electric, pneumatic or hydraulic actuators.



## AREA OF USE





WaGate sluice gates can be installed in chambers, pumping stations or treatment plants.

Effectively used to stop the flow of firefighting water and as emergency shut-offs at roads and industries to prevent hazardous substances from reaching water sources.

WaGate sluice gates is also used in the event of an accident shutdown, as an oil separator and to handle extinguishing agents.

Is available in different models in sizes DN200-1400. For other models or sizes, please contact us.



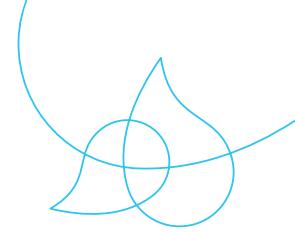
## ADVANTAGES OF WAGATE® SLUICE GATE

- No welding of the frame, which reduces the risk of corrosion, therefore longer operational life
- Encapsulated bearing and sliding parts built into the HDPE housing, reducing the risk of corrosion and degradation of the materials
- Easy assembly with loose mounting brackets locked in the frame, as well as fixed lifting brackets
- Non-rising spindle, integrated and shielded at the damper plate
- Available for on and off seated sealing



Contact: wapro.com +46 (0)454 185 10 sales@wapro.com  
Contact GB and IE: wapro.com +44 114 308 0123 sales@wapro.com

**WAPRO**®



## WAGATE SLUICE GATE INSTALLATION PROTECTING SCANDINAVIAS LONGEST RIVER

### THE PROBLEM:

Karlstad is a municipality in Värmland with over 95,000 inhabitants, situated halfway between Stockholm and Oslo. In the Karlstad region, you will find Karlstad, Forshaga, Grums, Hammarö, and Kil, which together have 145,000 inhabitants.

Karlstad is a major city for visitors, where you can experience concerts, visit museums, or watch Färjestad's hockey team. Here, you will also find the Klarälven River, which is approximately 286 miles long.

The municipality had troubles with the Klarälven River. When the water level rose, nearby areas would flood. To protect the pedestrian and bicycle underpass located nearby, they had to look into a flood protection solution.



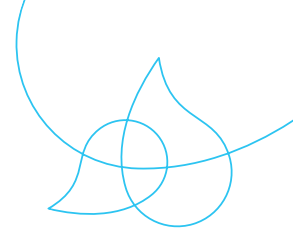
### THE SOLUTION:

The solution chosen was our WaGate Sluice Gate SPM-P-TG. When the water becomes too high in the Klarälven River, the gate closes and the water flowing to Torpnoret is pumped out into the river via a pumping station. With the help of a water meter that monitors the water level, they can shut off the water flow at higher water levels.

Thanks to the sluice gates, there is no flooding in the nearby areas. And as usual, we thank our customer in Karlstad and everyone involved for their great cooperation. It always pleases us when we can protect people and properties.







## SLUICE GATE - SPK TG DN 200-800

**AREA OF USE:** Sewer and stormwater, industrial facilities, process water and for the fishing and agricultural industry. SPK-TG seals from both sides.

### ADVANTAGES WITH WAGATE SPK-TG:

- No welding of the frame and damper plate, which reduces the risk of corrosion, therefore longer operational life
- Built-in wedge system in the frame, ensuring 100% advancement of the damper plate against the gasket with sealing from two sides
- Encapsulated bearing and sliding parts built into the HDPE housing, reducing the risk of corrosion and degradation of the materials
- Non-rising spindle
- O-ring seal mounted in PEHD for possible replacement
- Square or circular opening with the possibility for a tight connection of pipe to the damper



**OPERATION:** Hand wheel. Can be used with electric, pneumatic, or hydraulic actuators.

**SPECIAL DESIGN:** Spindle and nut above surface level (pedestal-mounted)

### MATERIAL:

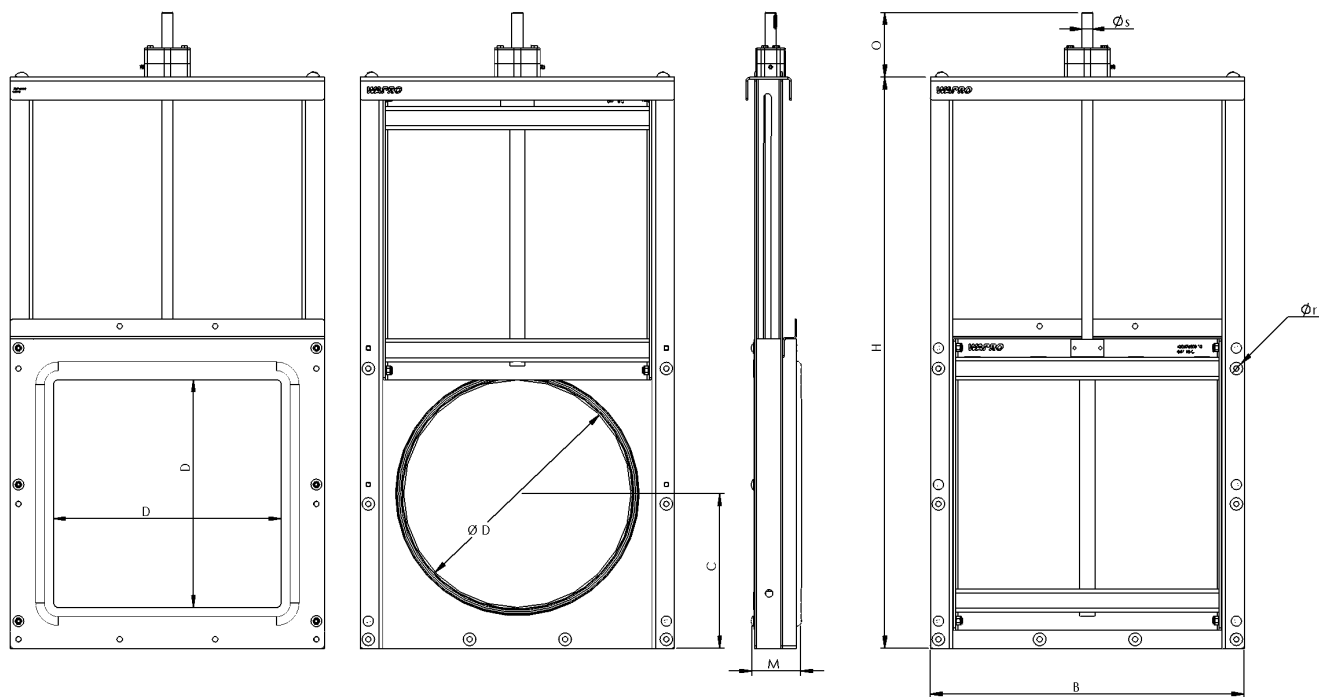
Frame	EN 1.4404 (EN 1.4462)
Damper plate	EN 1.4404 (EN 1.4462)
Back plate	PEHD
Spindle	EN 1.4571 (EN 1.4462)
Spindle nut	Tin bronze (Cu2Sn12)
Seal against the damper plate	EPDM
Seal against the wall	EPDM sponge rubber

### TECHNICAL DATA:

Sealing according to	DIN EN 12266.1
----------------------	----------------



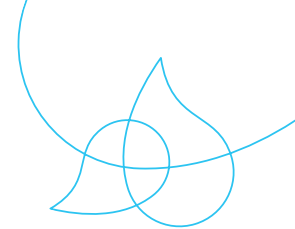
## SLUICE GATE - SPK TG DN 200-800



### DIMENSIONS IN [MM]

DN	D	B	C	H	M	ØR	O	ØS	NM	TURNS TO OPEN	WEIGHT [KG]	MWC
200	200	352	160	573	93	7xØ12	126	18	4	50	21	6
250	250	402	185	673	87	7xØ12	146	18	6	63	22	6
300	315	481	240	848	92	8xØ12	142	18	7	75	30	6
400	400	588	280	1016	110	8xØ12	143	18	9	100	40	6
500	500	690	340	1255	111	10xØ12	142	22	12	100	60	6
600	630	820	410	1516	132	13xØ12	135	22	19	120	85	5
700	710	910	450	1676	136	13xØ12	193	25	24	140	105	3
800	800	1000	495	1857	136	13xØ12	203	25	30	160	125	3

Other dimensions on request. Reserves the right to changes.



## SLUICE GATE - SPS-TG DN 200-630

**AREA OF USE:** Sewer and stormwater, industrial facilities and process water.  
SPS-TG seals from the mounting side.

### ADVANTAGES WITH WAGATE SPS-TG:

- No welding of frame or damper plate, which reduces the risk of corrosion, therefore longer operational life
- Encapsulated bearing and sliding parts built into the HDPE housing, reducing the risk of corrosion and degradation of the materials
- No rising spindle, thereby requiring less space
- Square or circular opening with the possibility of tight pipe connection to damper. Can be manufactured with a rounded flange for installation in a chamber
- O-ring seal mounted in PEHD for replacement when worn. All bearings and sliding parts are encased in PEHD round part for pressure lubrication.



**OPERATION:** Manually with hand wheel. Can be used with electric, pneumatic, or hydraulic actuators.

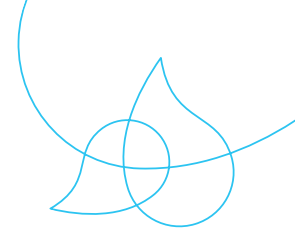
**SPECIAL DESIGN:** Spindle and nut above surface level (pedestal-mounted)

### MATERIAL:

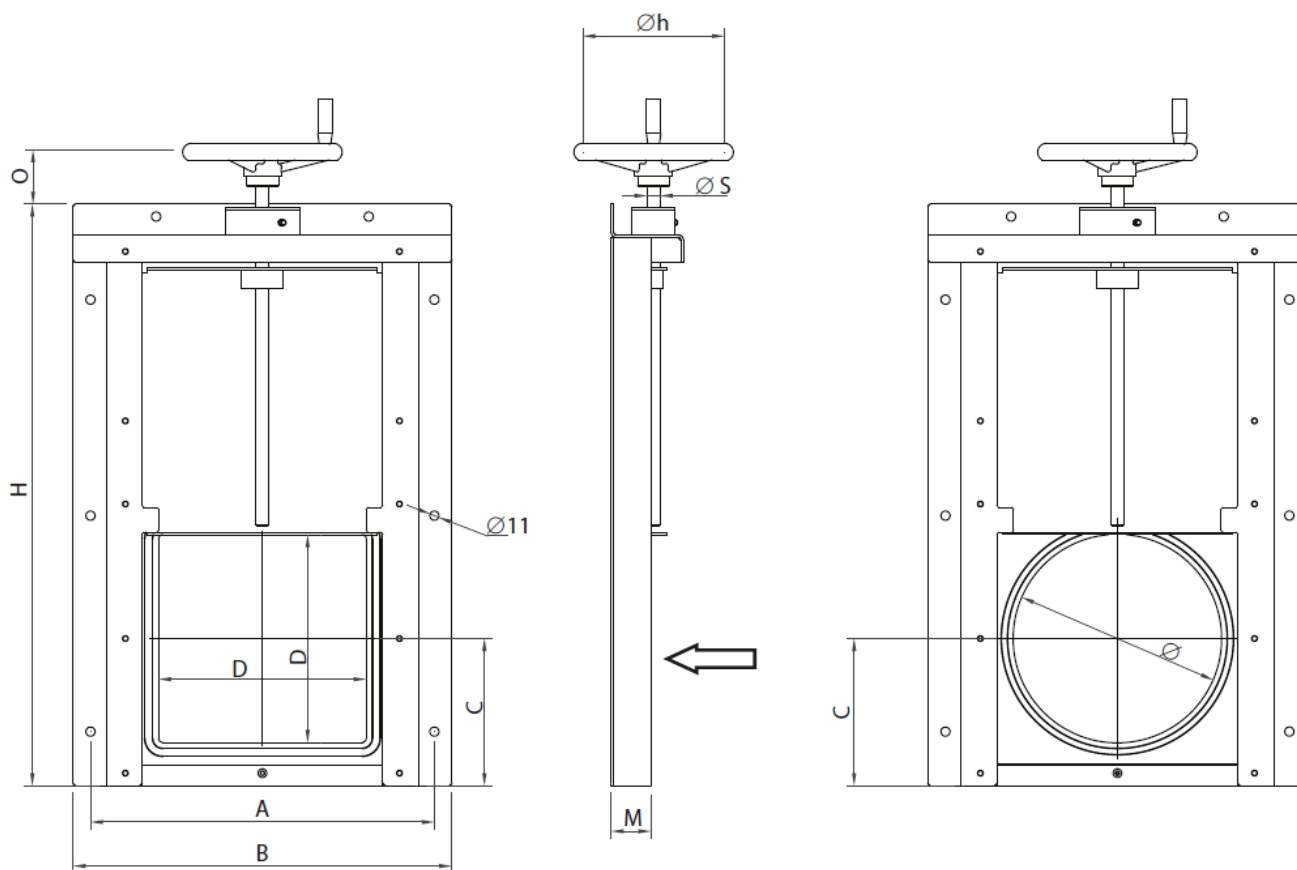
Frame	EN 1.4404 & PEHD
Damper plate	EN 1.4404
Spindle	EN 1.4571 (EN 1.4462)
Spindle nut	Tin bronze (Cu2Sn12)
Seal against the damper plate	EPDM
Seal against the wall	EPEM sponge rubber

### TECHNICAL DATA:

Sealing according to	DIN 19569-4
----------------------	-------------



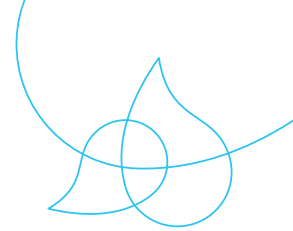
## SLUICE GATE - SPS-TG DN 200-630



### DIMENSIONER I MM]

DN	D	Ø	A	B	C	H	M	O	ØS	ØH	WEIGHT [KG]	MWC
200	200x200	200	364	406	152	600	48	65	18	200	13	4
250	250x250	250	414	456	177	700	48	80	18	250	16	4
300	315x315	315	479	521	210	805	48	60	18	250	19	4
400	400x400	400	564	606	252	1000	48	80	18	315	25	4
500	500x500	500	664	706	302	1200	48	80	22	315	33	3
600	630x630	630	794	836	365	1443	48	100	22	315	40	3

Other dimensions on request. Reserves the right to changes.



## SLUICE GATE - SPS TL/RTL DN 200-630

**AREA OF USE:** Sewer and stormwater, industrial facilities, process water and for the fishing and agricultural industry. SPS-TL/RTL is sealed from the mounting side.

### ADVANTAGES WITH WAGATE SPS-TL/RTL:

- Self-supporting frame pre-assembled and ready for operation for bolting onto a wall
- Lip O-ring seal mounted in PEHD for easy replacement. Manually operated damper that can be held in the open position
- Square or circular opening with the option for a tight pipe connection to the damper. Can be manufactured with a rounded flange for installation in a chamber



**VARIANT:** SPS-RTL with welded pipe for wall penetration and in chamber installation

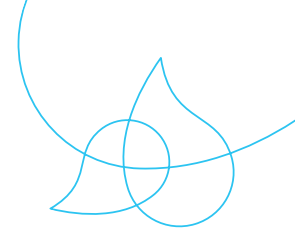
### MATERIAL:

Frame	EN 1.4404 & PEHD
Damper plate	EN 1.4404 (EN 1.4462)
Seal against the damper plate	EPDM
Seal against the wall	EPEM sponge rubber

### TECHNICAL DATA:

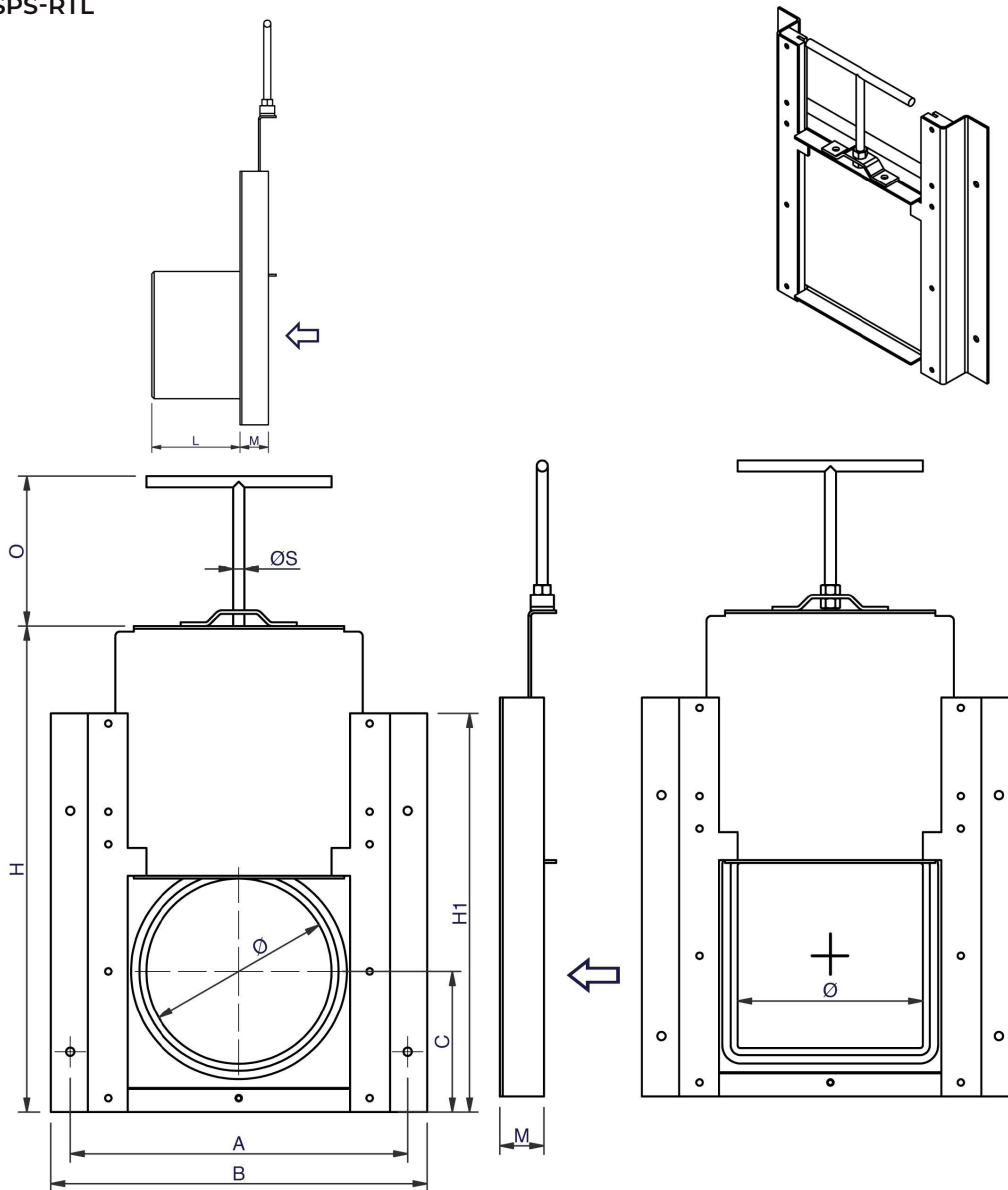
Sealing according to	DIN 19569-4
----------------------	-------------





## SLUICE GATE - SPS TL/RTL DN 200-630

SPS-RTL

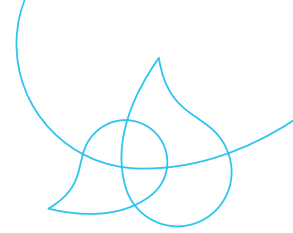


### DIMENSIONER I [MM]

DN	Ø	D	A	B	C	H	H1	L	M	O	ØS	WEIGHT [KG]	MWC
200	200	200x200	364	406	152	524	434	> 175	48	150	12	8	4
250	250	250x250	414	456	177	624	484	> 200	48	150	12	10	4
300	315	315x315	479	521	210	754	550	> 250	48	150	12	12	4
400	400	400x400	564	606	252	924	634	> 300	48	200	16	16	4
500	500	500x500	664	706	302	1124	732	> 375	48	200	16	21	2
600	630	630x630	794	836	365	1384	860	> 475	48	200	16	27	2

Other dimensions on request. Reserves the right to changes.

Contact: wapro.com +46 (0)454 185 10 sales@wapro.com  
 Contact GB and IE: wapro.com +44 114 308 0123 sales@wapro.com



## SLUICE GATE - SPM-S-TG DN 800-1400

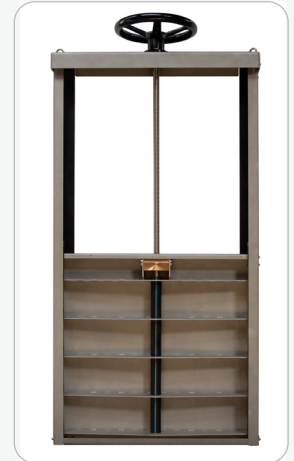
**AREA OF USE:** Sewer and stormwater, industrial facilities and process water.  
SPM-S-TG seals from both sides.

### ADVANTAGES WITH WAGATE SPM-S-TG:

- No welding of the frame, thus significantly reducing corrosion degradation, therefore longer operational life
- Encapsulated bearing and sliding parts built into the HDPE housing, reducing the risk of corrosion and degradation of the materials
- Easy assembly with mounting brackets locked in the frame, as well as fixed lifting brackets
- Non-rising spindle, integrated and shielded at the damper plate

**OPERATION:** Manually with hand wheel. Can be used with electric or hydraulic actuators.

**SPECIAL DESIGN:** Spindle and nut above surface level (pedestal-mounted).  
Round opening.

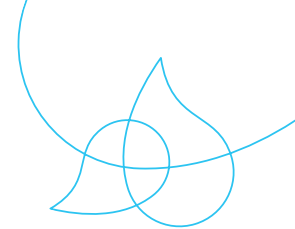


### MATERIAL:

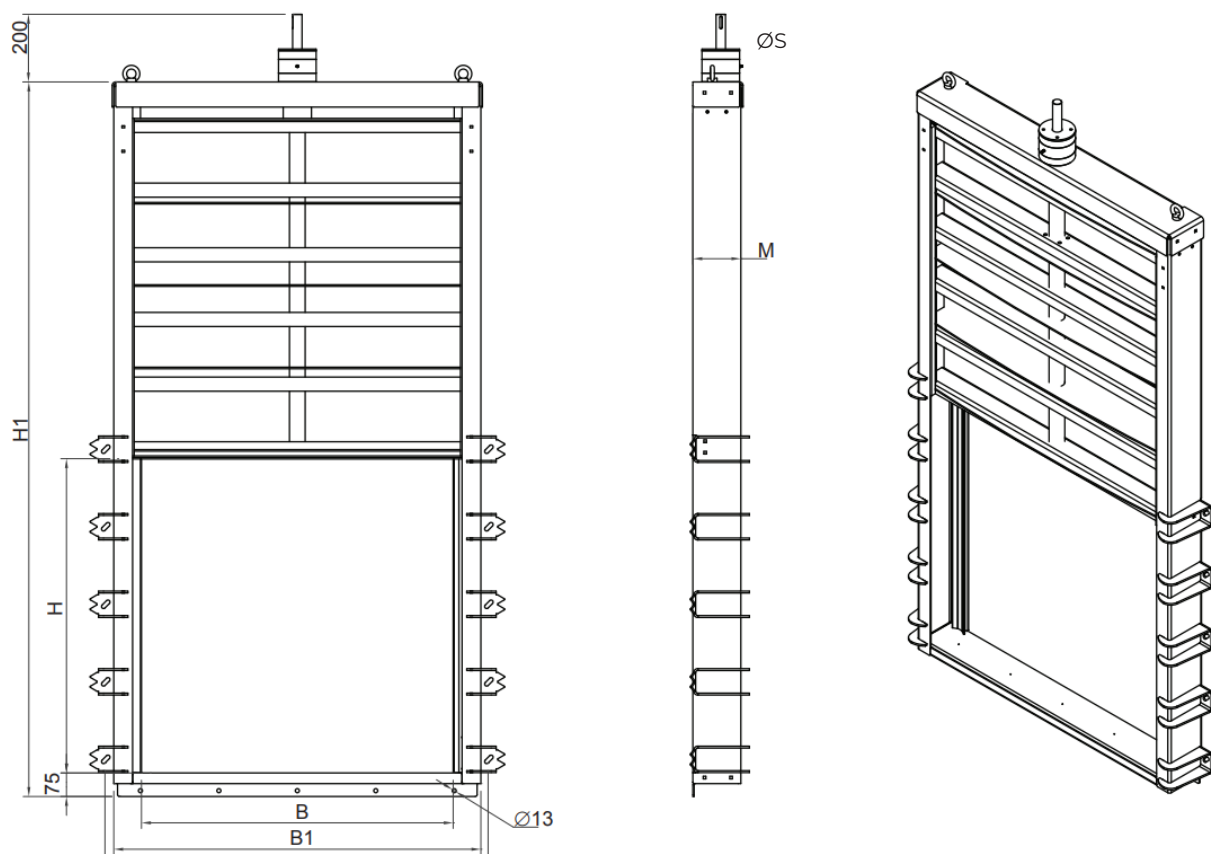
Frame	EN 1.4404 (EN 1.4462)
Damper plate	EN 1.4404 (EN 1.4462)
Spindle	EN 1.4571 (EN 1.4462)
Spindle nut	Tin bronze (Cu2Sn12)
Seal against the damper plate	EPDM
Seal against the wall	EPEM sponge rubber

### TECHNICAL DATA:

Sealing according to	DIN EN 12266.1
----------------------	----------------



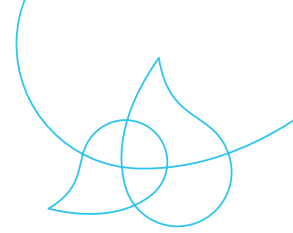
## SLUICE GATE - SPM-S-TG DN 800-1400



### DIMENSIONS IN [MM]

DN	H	H1	B	B1	ØR	ØS	M	NM	TURNS TO OPEN	WEIGHT [KG]	MWC
800	800	1875	970	1120	19 x Ø13	25	35	35	160	155	6
1000	1000	2275	970	1320	23 x Ø13	25	65	65	167	190	6
1200	1200	2675	970	1520	25 x Ø13	30	-	90	200	270	6
1400	1400	3100	1580	1730	29 x Ø13	30	-	140	234	335	6

Other dimensions on request. Reserves the right to changes.



## SLUICE GATE - SPM-P-TG DN 800-1400

**AREA OF USE:** Sewer and stormwater, industrial facilities and process water.  
SPM-P-TG seals from both sides.

### ADVANTAGES WITH WAGATE SPM-P-TG:

- No welding of the frame, thus significantly reducing corrosion degradation, therefore longer operational life
- Encapsulated bearing and sliding parts built into the HDPE housing, reducing the risk of corrosion and degradation of the materials
- Easy assembly with mounting brackets locked in the frame, as well as fixed lifting brackets
- Non-rising spindle, integrated and shielded at the damper plate

**OPERATION:** Manually with hand wheel. Can be used with electric or hydraulic actuators.

**SPECIAL DESIGN:** Spindle and nut above surface level (pedestal-mounted). Round opening.

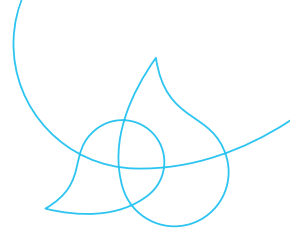


### MATERIAL:

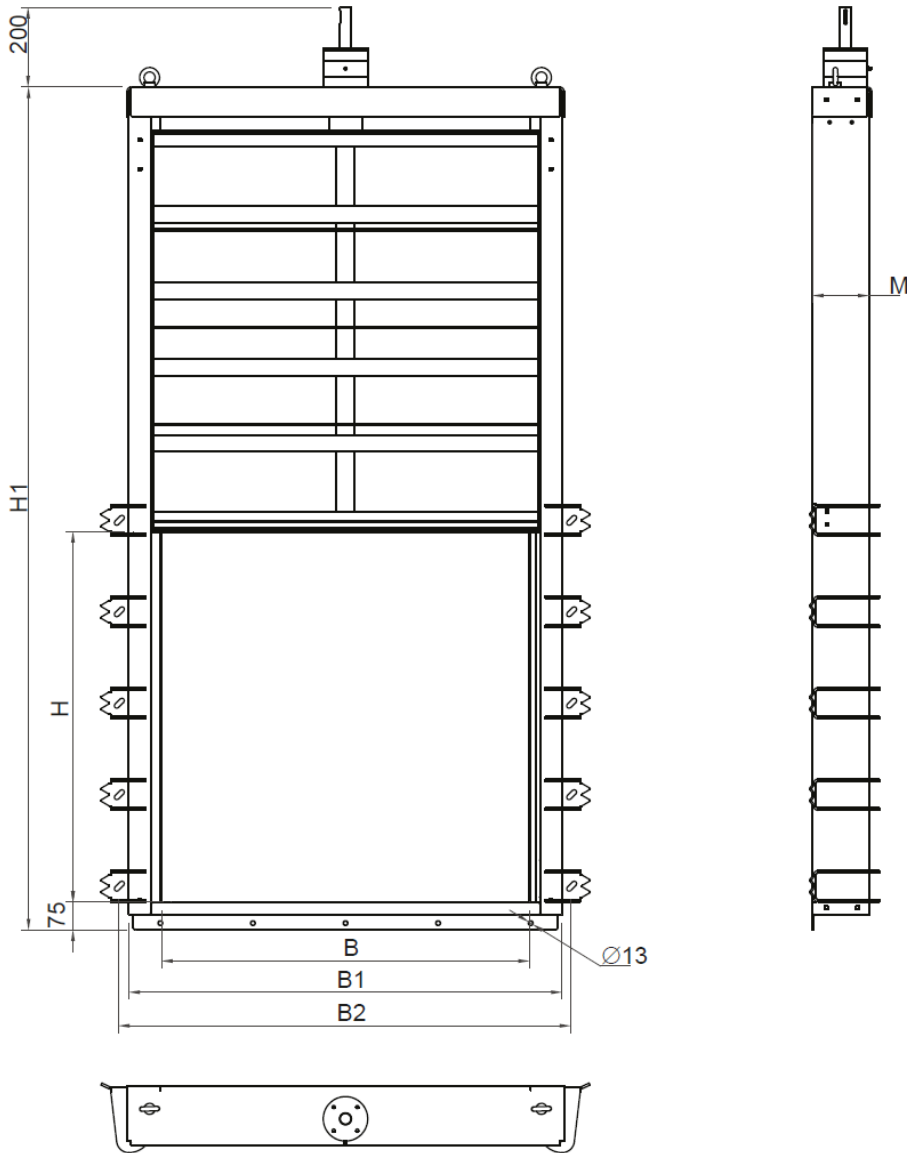
Frame	EN 1.4404 (EN 1.4462)
Damper plate	PEHD
Bracing on the damper plate	EN 1.4404 (EN 1.4462)
Spindle	EN 1.4571 (EN 1.4462)
Spindle nut	Tin bronze (Cu2Sn12)
Seal against the damper plate	EPDM
Seal against the wall	EPEM sponge rubber

### TECHNICAL DATA:

Sealing according to	DIN EN 12266.1
----------------------	----------------



## SLUICE GATE - SPM-P-TG DN 800-1400



### DIMENSIONS IN [MM]

DN	H	H1	B	B1	ØR	ØS	M	NM	TURNS TO OPEN	WEIGHT [KG]	MWC
800	800	1875	970	970	19 x Ø13	25	35	35	160	145	6
1000	1000	2275	970	1170	23 x Ø13	25	65	65	167	185	6
1200	1200	2675	970	1370	25 x Ø13	30	-	90	200	231	6
1400	1400	3275	1580	1570	29 x Ø13	30	-	140	234	270	6

Other dimensions on request. Reserves the right to changes.