

SLUICE GATES

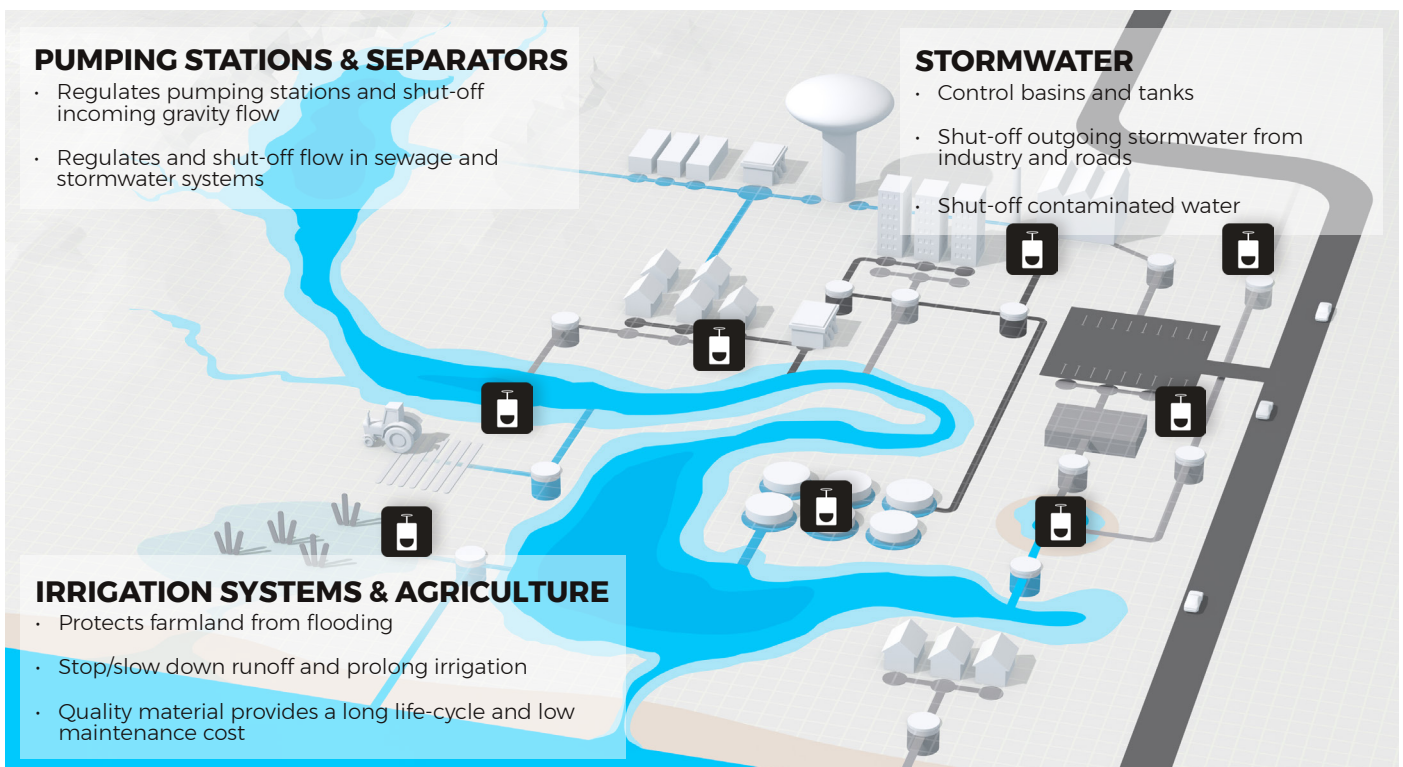
It is devastating if environmentally hazardous substances reach our stormwater, recipients, pastures or water sources. With our solutions you ensure emergency shut-off of roads run-off following an accident or industrial applications. Our solutions can also shut off incoming pipes in pumping stations to facilitate straightforward operational and maintenance work to ensure safety.

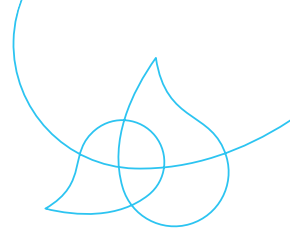
Wapro's core competence is stormwater and wastewater technology, and flow regulation in gravity systems. We offer complete solutions with gate valves, sluice gates, flap valves, shut-off valves, check valves and flow control devices all of which can be adapted to fit existing or new systems.

Our WaGate product range consists of gate valves, sluice gates and flap valves for flow control with corrosion free and non-polluting HDPE, EPDM and stainless steel. The valves can be customized with electric, pneumatic or hydraulic actuators.



AREA OF USE





WaGate sluice gates can be installed in chambers, pumping stations or treatment plants.

Effectively used to stop the flow of firefighting water and as emergency shut-offs at roads and industries to prevent hazardous substances from reaching water sources.

WaGate sluice gates is also used in the event of an accident shutdown, as an oil separator and to handle extinguishing agents.

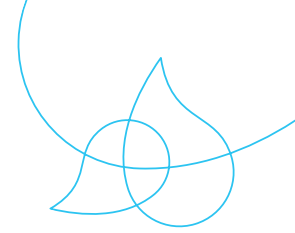
Is available in different models in sizes NPS 8-56. For other models or sizes, please contact us.



ADVANTAGES OF WAGATE® SLUICE GATE

- No welding of the frame, which reduces the risk of corrosion, therefore longer operational life
- Encapsulated bearing and sliding parts built into the HDPE housing, reducing the risk of corrosion and degradation of the materials
- Easy assembly with loose mounting brackets locked in the frame, as well as fixed lifting brackets
- Non-rising spindle, integrated and shielded at the damper plate
- Available for on and off seated sealing





WAGATE SLUICE GATE INSTALLATION PROTECTING SCANDINAVIAS LONGEST RIVER

THE PROBLEM:

Karlstad is a municipality in Värmland with over 95,000 inhabitants, situated halfway between Stockholm and Oslo. In the Karlstad region, you will find Karlstad, Forshaga, Grums, Hammarö, and Kil, which together have 145,000 inhabitants.

Karlstad is a major city for visitors, where you can experience concerts, visit museums, or watch Färjestad's hockey team. Here, you will also find the Klarälven River, which is approximately 286 miles long.

The municipality had troubles with the Klarälven River. When the water level rose, nearby areas would flood. To protect the pedestrian and bicycle underpass located nearby, they had to look into a flood protection solution.

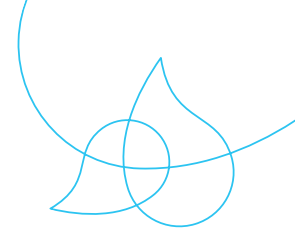


THE SOLUTION:

The solution chosen was our WaGate Sluice Gate SPM-P-TG. When the water becomes too high in the Klarälven River, the gate closes and the water flowing to Torpnoret is pumped out into the river via a pumping station. With the help of a water meter that monitors the water level, they can shut off the water flow at higher water levels.

Thanks to the sluice gates, there is no flooding in the nearby areas. And as usual, we thank our customer in Karlstad and everyone involved for their great cooperation. It always pleases us when we can protect people and properties.





SLUICE GATE - SPK TG NPS 8-32

AREA OF USE: Sewer and stormwater, industrial facilities, process water and for the fishing and agricultural industry. SPK-TG seals from both sides.

ADVANTAGES WITH WAGATE SPK-TG:

- No welding of the frame and damper plate, which reduces the risk of corrosion, therefore longer operational life
- Built-in wedge system in the frame, ensuring 100% advancement of the damper plate against the gasket with sealing from two sides
- Encapsulated bearing and sliding parts built into the HDPE housing, reducing the risk of corrosion and degradation of the materials
- Non-rising spindle
- O-ring seal mounted in PEHD for possible replacement
- Square or circular opening with the possibility for a tight connection of pipe to the damper



OPERATION: Hand wheel. Can be used with electric, pneumatic, or hydraulic actuators.

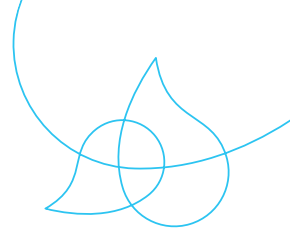
SPECIAL DESIGN: Spindle and nut above surface level (pedestal-mounted)

MATERIAL:

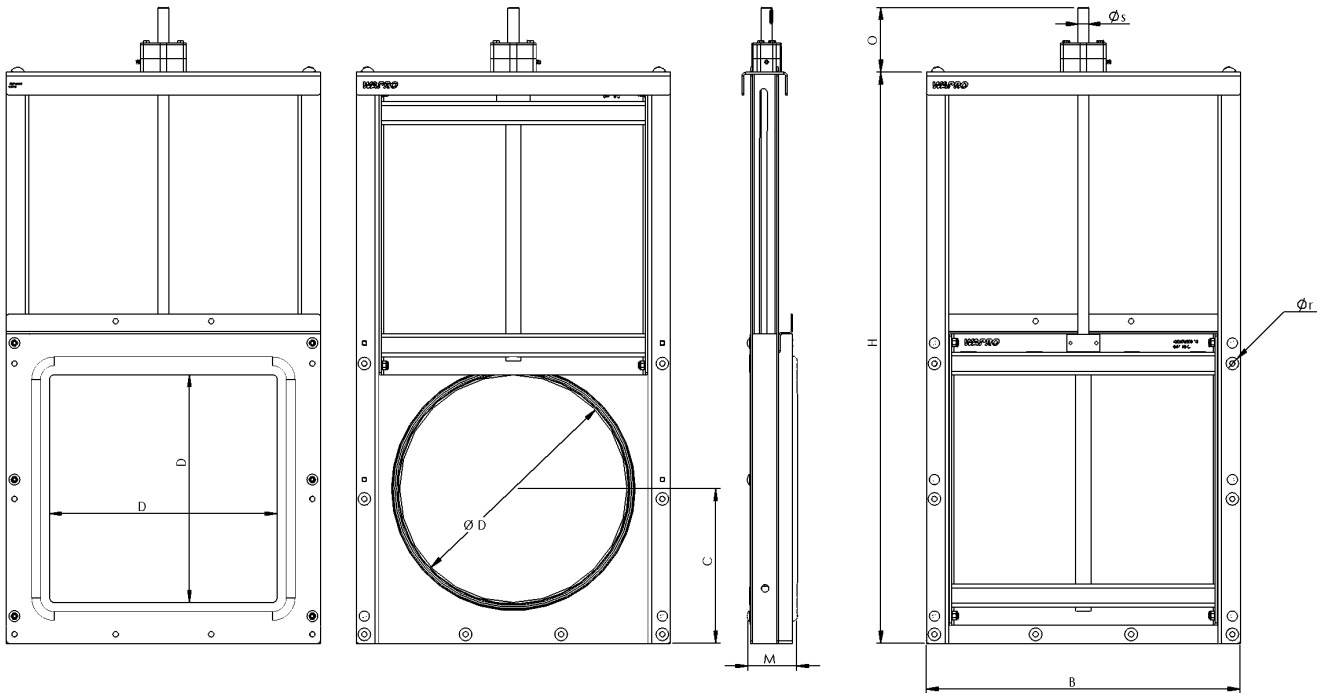
Frame	EN 1.4404 (EN 1.4462)
Damper plate	EN 1.4404 (EN 1.4462)
Back plate	PEHD
Spindle	EN 1.4571 (EN 1.4462)
Spindle nut	Tin bronze (Cu2Sn12)
Seal against the damper plate	EPDM
Seal against the wall	EPDM sponge rubber

TECHNICAL DATA:

Sealing according to	DIN EN 12266.1
----------------------	----------------



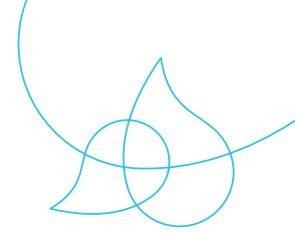
SLUICE GATE - SPK TG NPS 8-32



DIMENSIONS IN [INCHES]

NPS	D	B	C	H	M	ØR	O	ØS	NM	TURNS TO OPEN	WEIGHT [LBS]	MWC
8	7,87	13,86	6,30	22,56	3,66	0,28xØ0.47	4,96	0,71	0,16	50	46,3	6
10	9,84	15,83	7,28	26,50	3,43	0,28xØ0.47	5,75	0,71	0,24	63	48,5	6
12	12,40	18,94	9,45	33,39	3,62	0,31xØ0.47	5,59	0,71	0,28	75	66,1	6
16	15,75	23,15	11,02	40,00	4,33	0,31xØ0.47	5,63	0,71	0,35	100	88,2	6
20	19,69	27,17	13,39	49,41	4,37	0,39xØ0.47	5,59	0,87	0,47	100	132,3	6
24	24,80	32,28	16,14	59,69	5,20	0,51xØ0.47	5,31	0,87	0,75	120	187,4	5
28	27,95	35,83	17,72	65,98	5,35	0,51xØ0.47	7,60	0,98	0,94	140	231,5	3
32	31,50	39,37	19,49	73,11	5,35	0,51xØ0.47	7,99	0,98	1,18	160	275,6	3

Other dimensions on request. Reserves the right to changes.



SLUICE GATE - SPS-TG NPS 8-24

AREA OF USE: Sewer and stormwater, industrial facilities and process water.

SPS-TG seals from the mounting side.

ADVANTAGES WITH WAGATE SPS-TG:

- No welding of frame or damper plate, which reduces the risk of corrosion, therefore longer operational life
- Encapsulated bearing and sliding parts built into the HDPE housing, reducing the risk of corrosion and degradation of the materials
- No rising spindle, thereby requiring less space
- Square or circular opening with the possibility of tight pipe connection to damper. Can be manufactured with a rounded flange for installation in a chamber
- O-ring seal mounted in PEHD for replacement when worn. All bearings and sliding parts are encased in PEHD round part for pressure lubrication.



OPERATION: Manually with hand wheel. Can be used with electric, pneumatic, or hydraulic actuators.

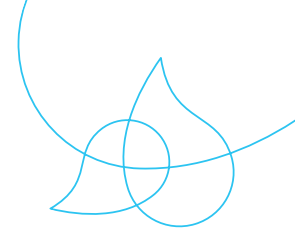
SPECIAL DESIGN: Spindle and nut above surface level (pedestal-mounted)

MATERIAL:

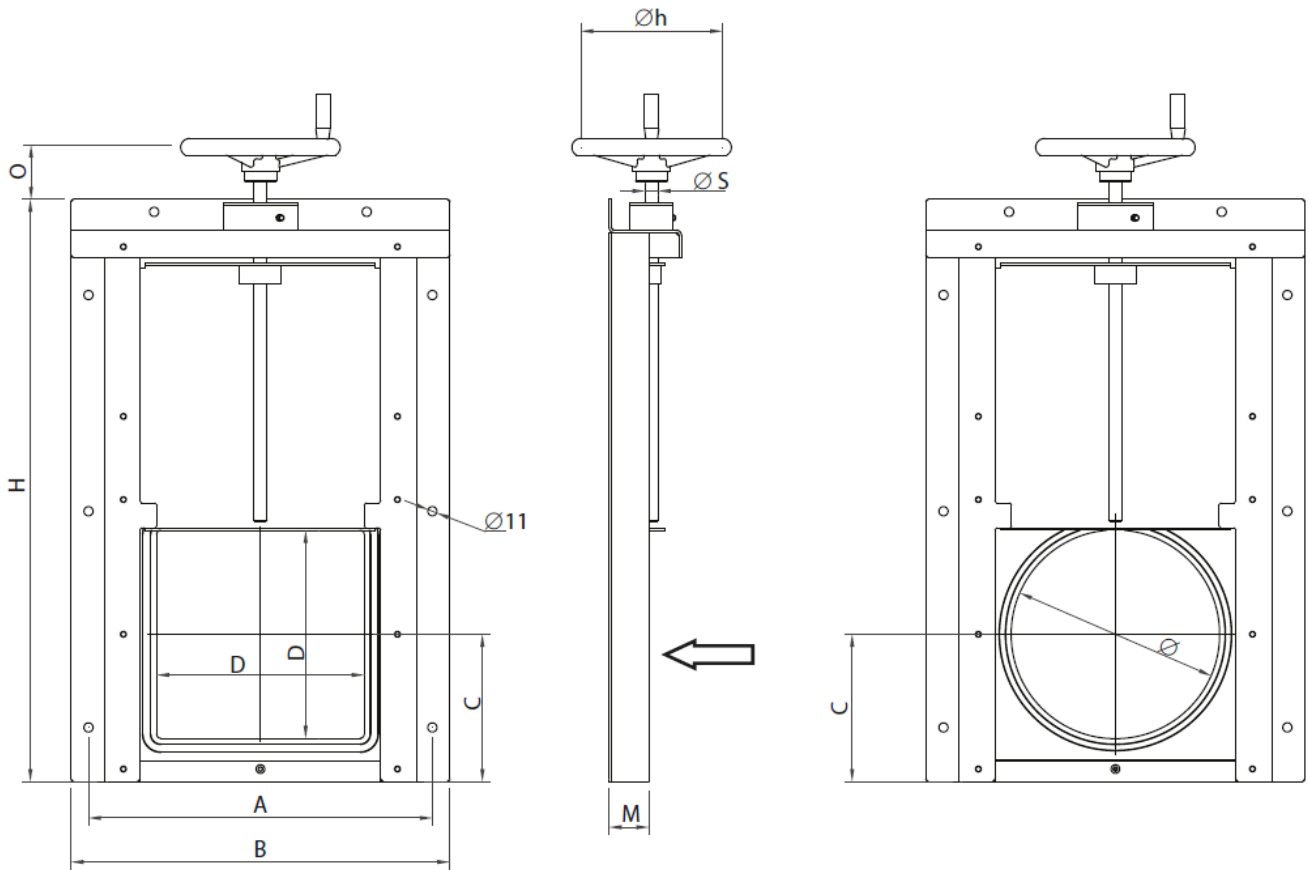
Frame	EN 1.4404 & PEHD
Damper plate	EN 1.4404
Spindle	EN 1.4571 (EN 1.4462)
Spindle nut	Tin bronze (Cu2Sn12)
Seal against the damper plate	EPDM
Seal against the wall	EPEM sponge rubber

TECHNICAL DATA:

Sealing according to	DIN 19569-4
----------------------	-------------



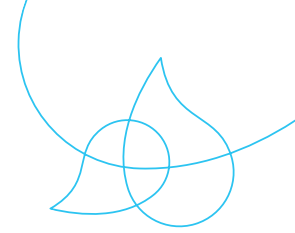
SLUICE GATE - SPS-TG NPS 8-24



DIMENSIONS IN [INCHES]

NPS	D	Ø	A	B	C	H	M	O	Øs	ØH	WEIGHT [LBS]	MWC
8	8x8	7,87	14,33	15,98	5,98	23,62	1,9	2,56	0,71	7,87	28,7	4
10	10x10	9,84	16,30	17,95	6,97	27,56	1,9	3,15	0,71	9,84	35,3	4
12	12x12	12,40	18,86	20,51	8,27	31,69	1,9	2,36	0,71	9,84	41,9	4
16	16x16	15,75	22,20	23,86	9,92	39,37	1,9	3,15	0,71	12,40	55,1	4
20	20x20	19,69	26,14	27,80	11,89	47,24	1,9	3,15	0,87	12,40	72,8	3
24	24x24	24,80	31,26	32,91	14,37	56,81	1,9	3,94	0,87	12,40	88,2	3

Other dimensions on request. Reserves the right to changes.



SLUICE GATE - SPS TL/RTL NPS 8-24

AREA OF USE: Sewer and stormwater, industrial facilities, process water and for the fishing and agricultural industry. SPS-TL/RTL is sealed from the mounting side.

ADVANTAGES WITH WAGATE SPS-TL/RTL:

- Self-supporting frame pre-assembled and ready for operation for bolting onto a wall
- Lip O-ring seal mounted in PEHD for easy replacement. Manually operated damper that can be held in the open position
- Square or circular opening with the option for a tight pipe connection to the damper. Can be manufactured with a rounded flange for installation in a chamber



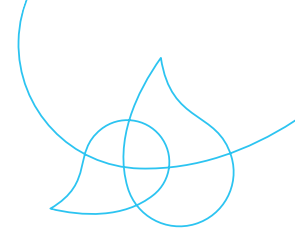
VARIANT: SPS-RTL with welded pipe for wall penetration and in chamber installation

MATERIAL:

Frame	EN 1.4404 & PEHD
Damper plate	EN 1.4404 (EN 1.4462)
Seal against the damper plate	EPDM
Seal against the wall	EPEM sponge rubber

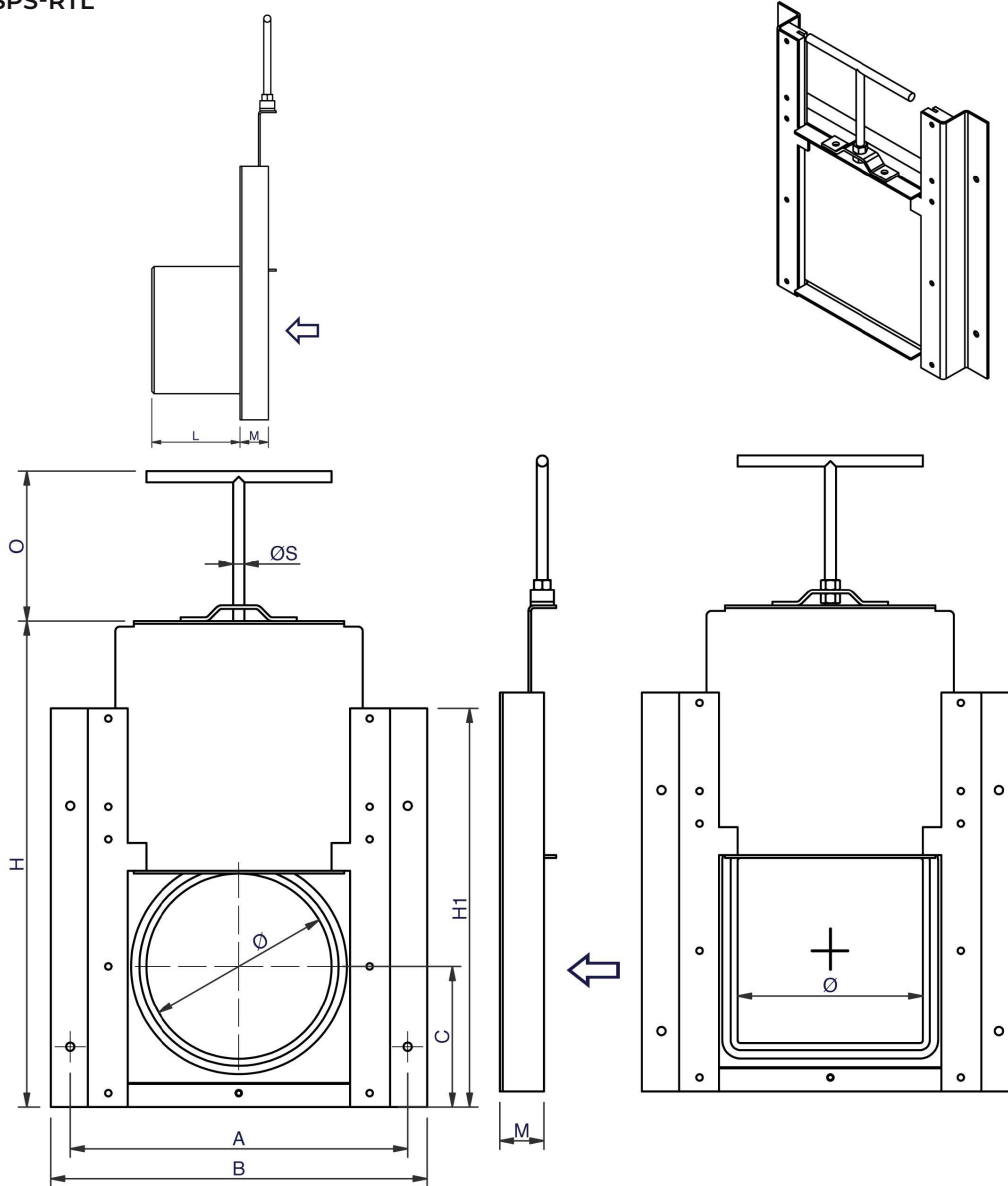
TECHNICAL DATA:

Sealing according to	DIN 19569-4
----------------------	-------------



SLUICE GATE - SPS TL/RTL NPS 8-24

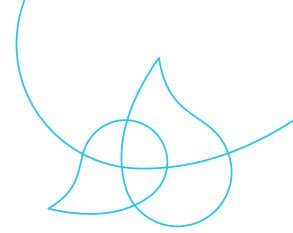
SPS-RTL



DIMENSIONS IN [INCHES]

NPS	Ø	D	A	B	C	H	H1	L	M	O	ØS	WEIGHT [LBS]	MWC
8	8	8x8	14,33	15,98	5,98	20,63	17,09	> 6,89	1,9	5,91	0,47	17,6	4
10	10	10x10	16,30	17,95	6,97	24,57	19,06	> 7,87	1,9	5,91	0,47	22,0	4
12	14	14x14	18,86	20,51	8,27	29,69	21,65	> 9,84	1,9	5,91	0,47	26,5	4
16	16	16x16	22,20	23,86	9,92	36,38	24,96	> 11,81	1,9	7,87	0,63	35,3	4
20	20	20x20	26,14	27,80	11,89	44,25	28,82	> 14,76	1,9	7,87	0,63	46,3	2
24	25	25x25	31,26	32,91	14,37	54,49	33,86	> 18,70	1,9	7,87	0,63	59,5	2

Other dimensions on request. Reserves the right to changes.



SLUICE GATE - SPM-S-TG NPS 32-56

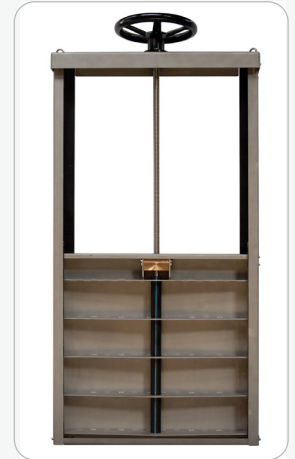
AREA OF USE: Sewer and stormwater, industrial facilities and process water.
SPM-S-TG seals from both sides.

ADVANTAGES WITH WAGATE SPM-S-TG:

- No welding of the frame, thus significantly reducing corrosion degradation, therefore longer operational life
- Encapsulated bearing and sliding parts built into the HDPE housing, reducing the risk of corrosion and degradation of the materials
- Easy assembly with mounting brackets locked in the frame, as well as fixed lifting brackets
- Non-rising spindle, integrated and shielded at the damper plate

OPERATION: Manually with hand wheel. Can be used with electric or hydraulic actuators.

SPECIAL DESIGN: Spindle and nut above surface level (pedestal-mounted). Round opening.

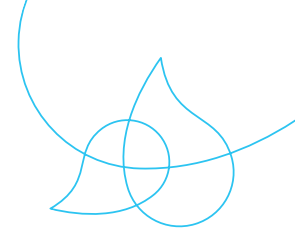


MATERIAL:

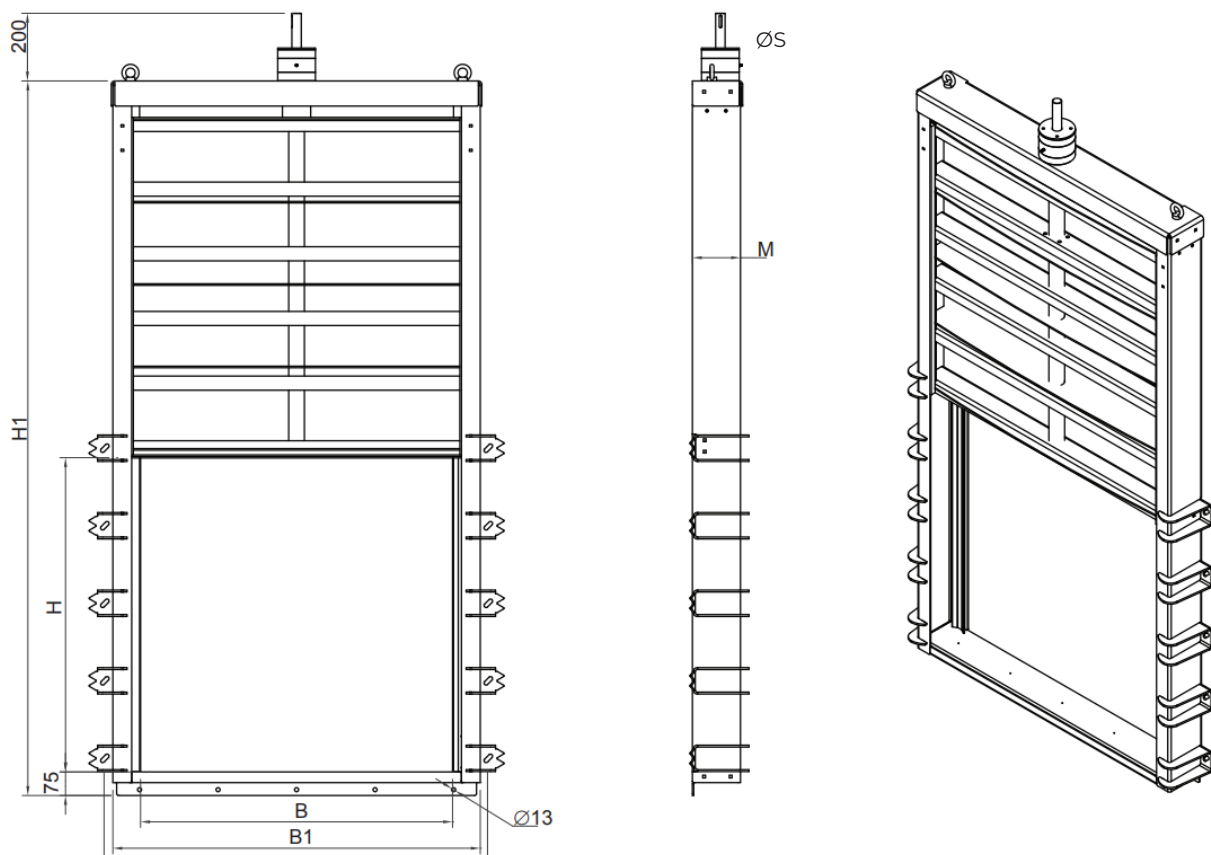
Frame	EN 1.4404 (EN 1.4462)
Damper plate	EN 1.4404 (EN 1.4462)
Spindle	EN 1.4571 (EN 1.4462)
Spindle nut	Tin bronze (Cu2Sn12)
Seal against the damper plate	EPDM
Seal against the wall	EPEM sponge rubber

TECHNICAL DATA:

Sealing according to	DIN EN 12266.1
----------------------	----------------



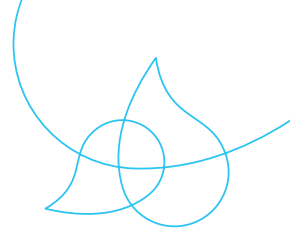
SLUICE GATE - SPM-S-TG NPS 32-56



DIMENSIONS IN [INCHES]

NPS	H	H1	B	B1	Ø13	ØS	M	NM	TURNS TO OPEN	WEIGHT [LBS]	MWC
32	32	73,82	38,19	44,09	0.75x Ø0,51	0.98	1,38	1,38	160	341,7	6
40	40	89,57	38,19	51,97	0.91 x Ø0,51	0.98	2,56	2,56	167	418,9	6
48	48	105,31	38,19	59,84	0.98 x Ø0,51	1.18	-	3,54	200	595,2	6
56	56	122,05	62,20	68,11	1.14 x Ø0,51	1.18	-	5,51	234	738,5	6

Other dimensions on request. Reserves the right to changes.



SLUICE GATE - SPM-P-TG NPS 32-56

AREA OF USE: Sewer and stormwater, industrial facilities and process water.
SPM-P-TG seals from both sides.

ADVANTAGES WITH WAGATE SPM-P-TG:

- No welding of the frame, thus significantly reducing corrosion degradation, therefore longer operational life
- Encapsulated bearing and sliding parts built into the HDPE housing, reducing the risk of corrosion and degradation of the materials
- Easy assembly with mounting brackets locked in the frame, as well as fixed lifting brackets
- Non-rising spindle, integrated and shielded at the damper plate

OPERATION: Manually with hand wheel. Can be used with electric or hydraulic actuators.

SPECIAL DESIGN: Spindle and nut above surface level (pedestal-mounted). Round opening.

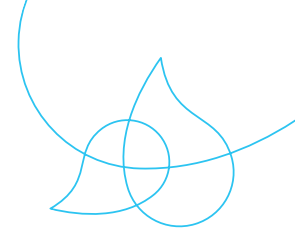


MATERIAL:

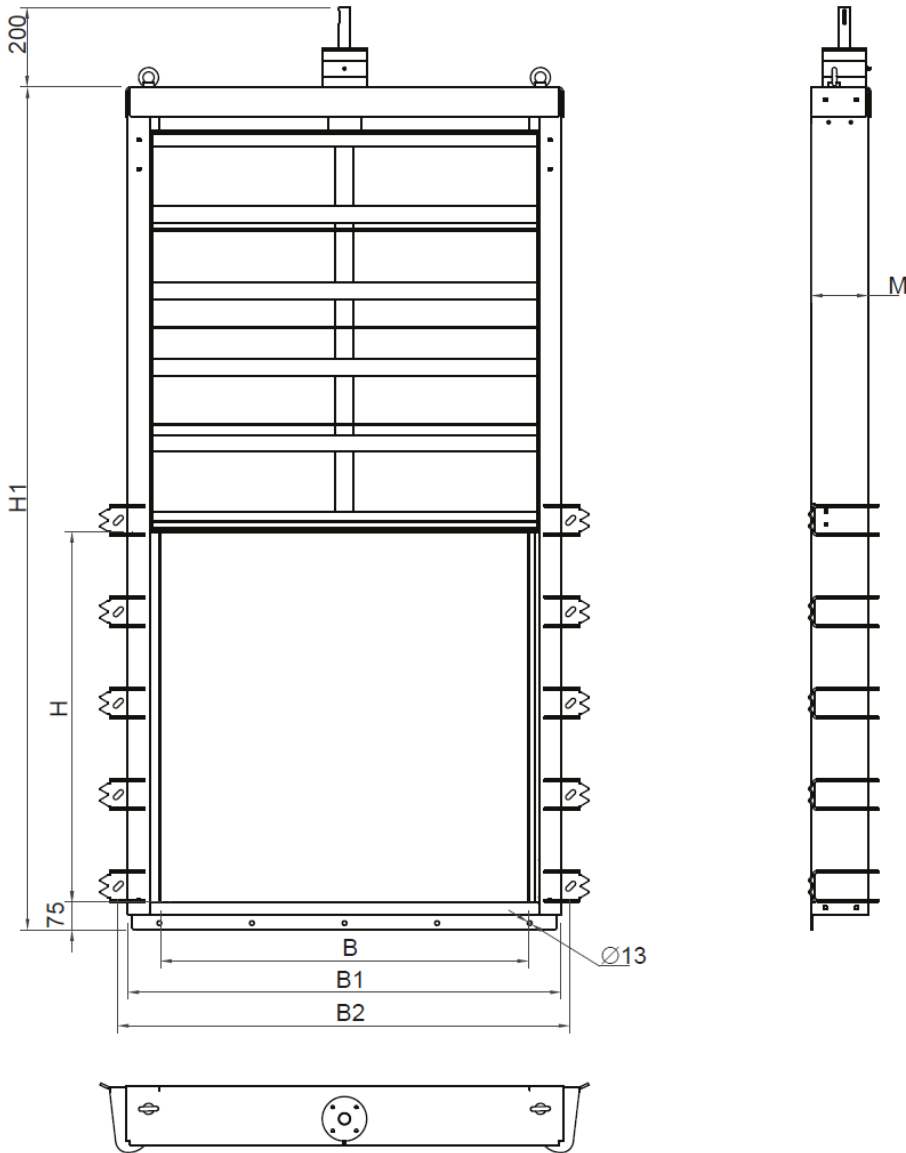
Frame	EN 1.4404 (EN 1.4462)
Damper plate	PEHD
Bracing on the damper plate	EN 1.4404 (EN 1.4462)
Spindle	EN 1.4571 (EN 1.4462)
Spindle nut	Tin bronze (Cu2Sn12)
Seal against the damper plate	EPDM
Seal against the wall	EPEM sponge rubber

TECHNICAL DATA:

Sealing according to	DIN EN 12266.1
----------------------	----------------



SLUICE GATE - SPM-P-TG NPS 32-56



DIMENSIONS IN [INCHES]

NPS	H	H1	B	B1	ØR	ØS	M	NM	TURNS TO OPEN	WEIGHT	MWC
32	32	73,82	38,19	38,19	0.75 x Ø0,51	0.98	1,38	1,38	160	319,7	6
40	40	89,57	38,19	46,06	0.91 x Ø0,51	0.98	2,56	2,56	167	407,9	6
48	48	105,31	38,19	53,94	0.98 x Ø0,51	1.18	-	3,54	200	509,3	6
56	56	128,93	62,20	61,81	1.14 x Ø0,51	1.18	-	5,51	234	595,2	6

Other dimensions on request. Reserves the right to changes.