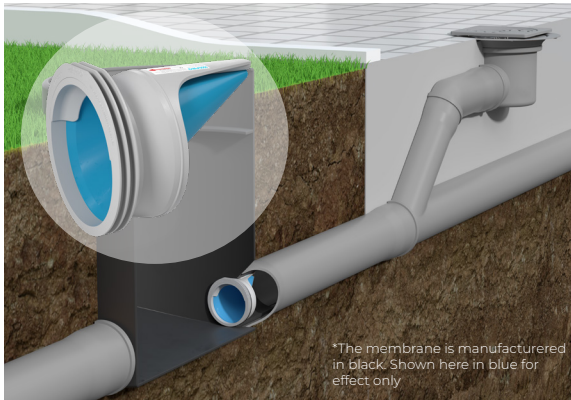


## COMPLETE HOME PROTECTION WITH NON-RETURN VALVES BY WAPRO

Wapro's complete range of backflow protection products for residential use provides protection against backflow flooding and gives peace of mind. With WaStop non-return check valve available in two variations and the WaBack Residential chamber complete protection against sewer backflow can be provided for homes and other buildings.

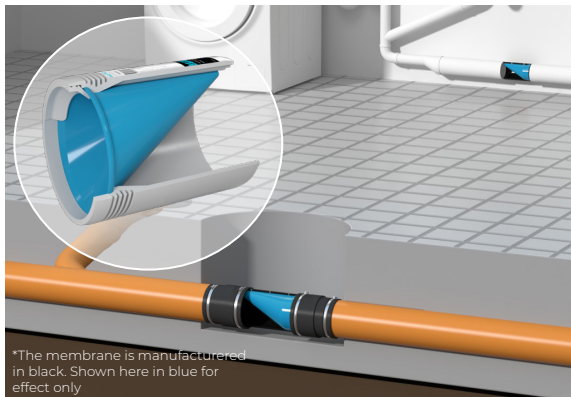


### WASTOP® PUSHFIT DN110 (4'')

WaStop PushFit is designed to be installed in a shallow chamber outside the home on the outgoing sewer line. By installing the WaStop PushFit on the upstream side of the chamber the home will be instantly protected from sewer surcharges and odours.

Installation: In shallow chamber

Size: DN110 (4'')

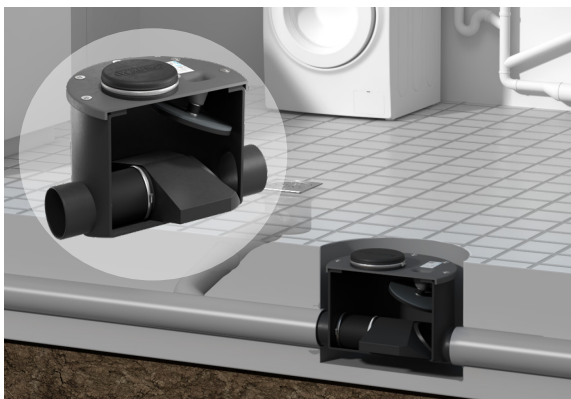


### WASTOP® RSD DN110 (4'')

WaStop RSD is designed to be installed inline on the sewer lateral. Remove a section of pipe and install the WaStop RSD valve using slide couplings to seal in place. An access cover should be placed over the site of the valve installation.

Installation: Sanitary sewer lateral inside or outside the home

Size: DN110 (4'')



### WABACK® RSD CHAMBER DN110 (4'')

WaBack Residential is an all-in-one installation with a chamber for inspection purposes and an in-built automatic check valve. Designed for low grade sewer lines. WaBack RSD can be fitted with an alarm to alert the home owner that a backflow event has occurred.

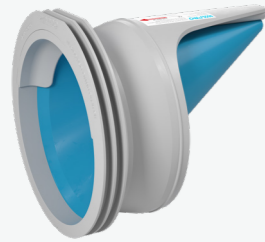
Installation: Sanitary sewer lateral inside the home

Size: Inlet/outlet DN110 (4'')

# WAPRO® RSD

## WASTOP® PUSHFIT DN110 (4")

WaStop PushFit protects homes and properties by allowing flow only out of the sewer line and prevents sewer backflow. Sewer backflow occurs in combined sewers when heavy rainfall events occur which overload the sewer system. Sewerage then finds an opening to release the pressure in the pipe. This point is often a toilet or hand basin in the lower levels of a home. With a WaStop PushFit installed outside your home the sewerage is stopped from entering the home and therefore effectively preventing damage to your home.

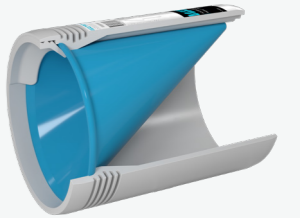


- Easy installation - no gluing or levelling during installation. PushFit slides into the pipe and twists into place. WaStop Residential is installed with flexible couplings
- Pulsating flow minimizing the risk of clogging - flushing your pipes clean with each pulsating action
- Unique heavy duty memory membrane giving up to 20 years of protection
- No moving parts - virtually maintenance-free. Check initially after 6 months and then as necessary
- Stops liquids, gases, odours, insects and small animals due to the tightly closed membrane

### THE BENEFITS OF WASTOP® PUSHFIT AND WASTOP RESIDENTIAL

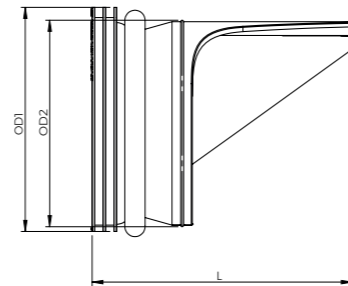
## WASTOP® RESIDENTIAL DN110 (4")

WaStop® Residential (RSD) stops backflow in sanitary sewer laterals. WaStop RSD should be installed in an accessible point either inside the house, or just outside. Installation is done by removing a section of pipe equal length to the WaStop and attaching the WaStop to the existing pipe with flexible couplings. Care should be taken to ensure the valve is installed right-side-up and should visually inspected twice per year.



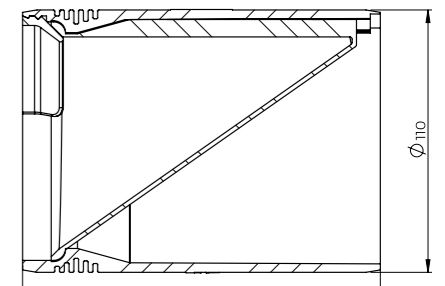
- Peace of mind - stops flooding effectively with 100% seal against backflow
- The market leader with over 20 years experience - driving innovation forward. No other valve exhibits pulsating flow and odour prevention
- Low opening pressure and high flow capacity to allow almost unimpeded flow through the valve
- Sealed against backflow to give you peace of mind
- CE-Approved

Modell	DN	OD1	OD2	L	Xmin	Opening Pressure	Closing Pressure
WS110-RSD-PF	[mm]	[mm]	[mm]	[mm]	[mm]	[mm]	[mm]
	110	110	99	130	180	180	70
	[inch]	[inch]	[inch]	[inch]	[inch]	[inch]	[inch]
	4	4	3.8	5	7	7	3

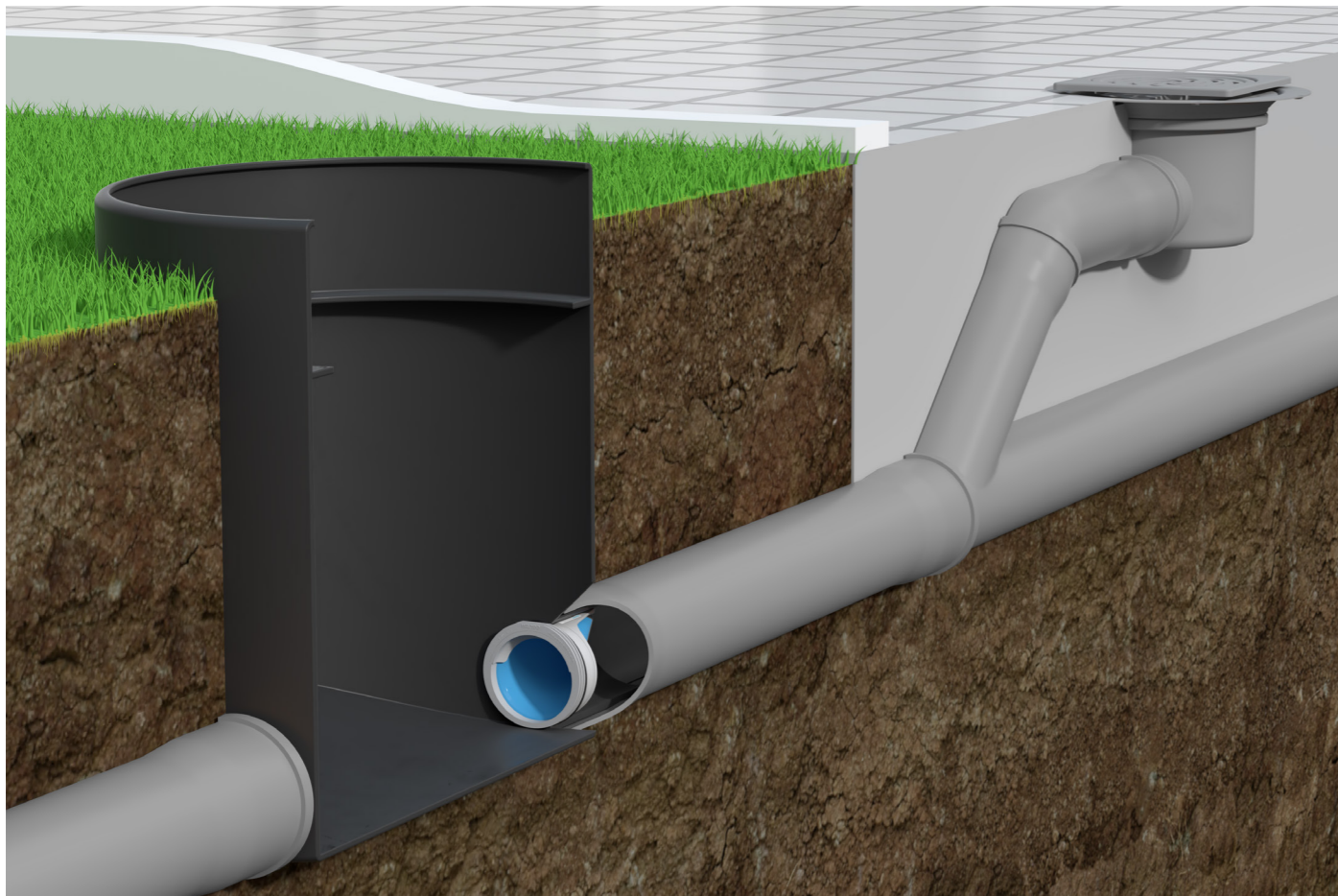


Max back pressure: 1.5m  
CE Certified SS-EN 13564-1 Type 0 PCT/EP2018/050106

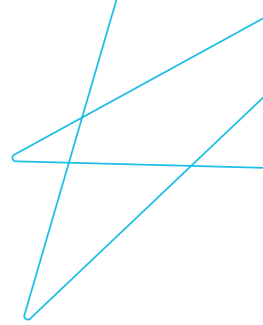
Modell	DN	OD	L	Xmin	Opening Pressure	Closing Pressure
WS110-RSD	[mm]	[mm]	[mm]	[mm]	[mm]	[mm]
	110	110	150	160	145	60
	[inch]	[inch]	[inch]	[inch]	[inch]	[inch]
	4	4	6	6	6	2



Max back pressure: 2m  
CE Certified SS-EN 13564-1 Type 0 PCT/EP2018/050106



# WABACK® RSD



## WABACK RESIDENTIAL DN110 (4")

WaBack Residential is an all-in-one installation with a chamber for inspection purposes and an in-built automatic check valve. Designed for keeping properties safe from sewer backflow and dry during heavy rainfall events.

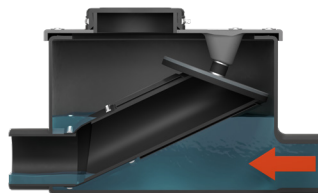
WaBack Residential is designed to be used in heavily polluted water and can therefore be used in sewer applications. WaBack has a completely open flow area for sewer pipes with minimal grade.

## THE BENEFITS OF WABACK RESIDENTIAL

- Installed for over 25 years worldwide with 100% satisfaction
- Superior construction materials
- Inspection chamber and check valve in one
- Low life cycle cost
- Easy all-in-one installation saving time and money
- Few moving parts - virtually maintenance-free
- Completely open pipe during normal operation
- CE Approved
- Easily handles heavily polluted waste water



WaBack valve in normal position. It works as an ordinary inspection chamber. The waste water flows freely through the valve without restriction.



When backflow occurs the flotation pipe is kept above water level. Backflow is prevented from flowing back into the home.



The water level has risen and the chamber is completely filled. The mouth of the pipe is pressed against the sealing disk. The flotation pipe returns to its original position when the water level in the chamber drops.

DN	Connections	H	Ø
[mm]	[mm]	[mm]	[mm]
WB110-RSD	110	300	420

DN	Connections	H	Ø
[mm]	[inch]	[inch]	[inch]
WB110-RSD	4	12	16.5

CE Certified SS-EN 13564-1:2002

