

GATE VALVES

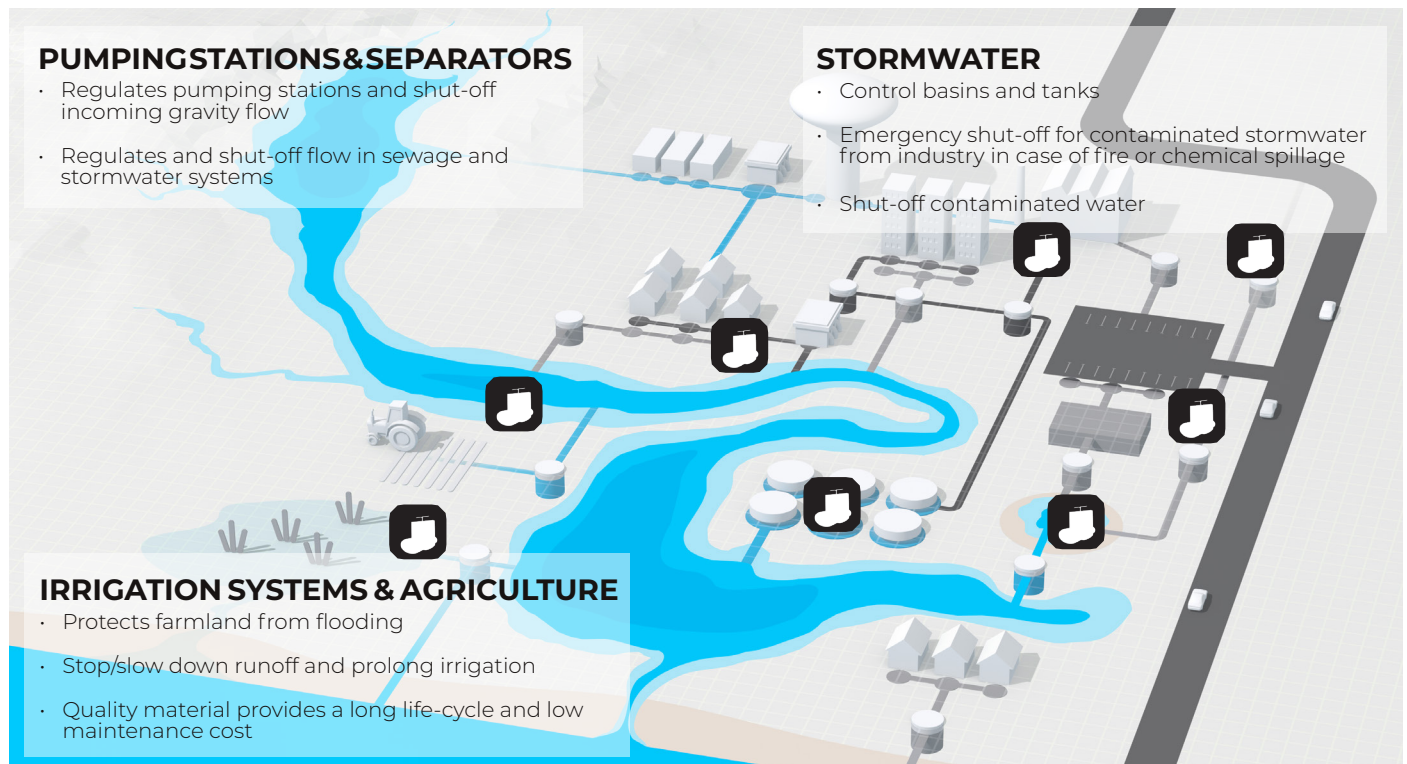
It is devastating if environmentally hazardous substances reach our stormwater, recipients, pastures or water sources. With our solutions you ensure emergency shut-off of roads run-off following an accident or industrial applications. Our solutions can also shut off incoming pipes in pumping stations to facilitate straightforward operational and maintenance work to ensure safety.

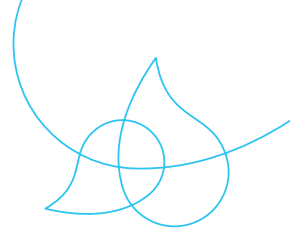
Wapro's core competence is stormwater and wastewater technology, and flow regulation in gravity-fed. We offer complete solutions with gate valves, sluice gates, flap valves, shut-off valves, check valves and flow control devices all of which can be adapted to fit existing or new systems.

Our WaGate product range consists of gate valves and sluice gates for flow control with corrosion free and non-polluting HDPE, EPDM and stainless steel. The valves can be customized with electric, pneumatic or hydraulic actuators.



AREA OF USE





WaGate gate valves can be installed inline on stormwater and wastewater networks. The most common applications are to isolate run-off from roads in the case of accidents, or close off incoming flow in pumping stations during maintenance.

Regulations and demands placed on industrial plants require that operators can quickly isolate and shut-off pipe networks in case of contamination. WaGate is the perfect solution in such cases.

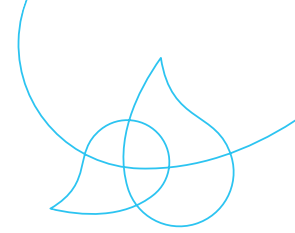
The standard dimension range covers models in sizes DN1000-1200. For larger valves, please contact us.



ADVANTAGES OF WAGATE® GATE VALVES

- Manufactured from the highest quality corrosion-resistant material
- Designed with full flow and with a self-cleaning pocket, which ensures complete closure of the valve blade
- Can be connected to the pipeline network with couplings, electric coupling, flanges, or welded together in open terrain
- Can be easily integrated into pipe networks or installed either in connection to or inside chambers
- Low operation and maintenance cost
- Light weight material saves time and money on heavy lifting equipment to ease installation procedures





IMPROVED MANAGEMENT OF EXTINGUISHING WATER IN HALMSTAD WITH WAGATE GATE VALVE

THE PROBLEM:

A fire training site in Halmstad, Sweden, where both stormwater and extinguishing water need to be managed, required a solution to handle the extinguishing water effectively and safely.

Extinguishing water contains many pollutants and hazardous substances that should not be released into nature, as these substances can cause damage to ecosystems and water sources.

According to the Swedish Environmental Protection Agency (2017), it is important to minimize the amount of extinguishing water released into nature due to its significantly negative impact.

Therefore, it was crucial for the customer to ensure that extinguishing water was not released into nature, causing environmental harm, which we were able to provide a solution for.

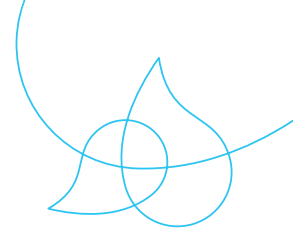


THE SOLUTION:

The solution we provided is a DN1200 plastic chamber with a flowing channel and an integrated gate valve (SVM-TG DN110), allowing the pipeline to be closed and all extinguishing water to be collected in the chamber for easier decontamination.

The chamber is equipped with a flowing channel (i.e., with a gradient towards the channel where the water flows), which allows water to naturally flow down into the channel and out of the chamber during cleaning, for example. The project consisted of four chambers, each with different angles for the inlet and outlet, while also being equipped with a flowing channel. Our colleagues in Technical Support was happy to create a custom-made solution to match the angles and assemble the chamber to meet the customer's needs.

As always, we are grateful to have the opportunity to help our customer in Halmstad with a unique solution that meets their needs and also contributes positively to the environment.

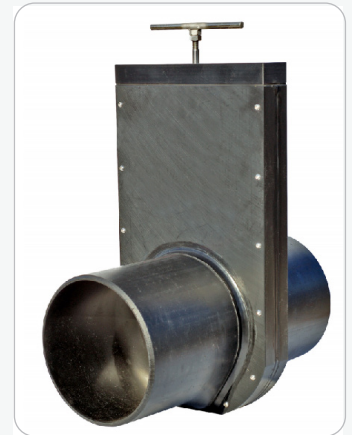


GATE VALVE - SVL DN/OD 4-12

AREA OF USE: Sewer and stormwater, process water and for the fishing and agricultural industry. SVL is for one-sided pressure.

ADVANTAGES WITH WAGATE SVL:

- Manufactured from the highest quality corrosion-resistant material
- Designed with full flow and with a self-cleaning pocket, which ensures complete closure of the valve blade
- Long lifespan. Low operating and maintenance costs
- Simple installation, which reduces costs
- Can be integrated into pipelines or both inside and outside well systems. The valve is suitable for installation in the ground without any form of protection



OPERATION: SVL is an on/off valve for manual operation with a draw rod.

Can be used with electric, pneumatic, or hydraulic actuators.

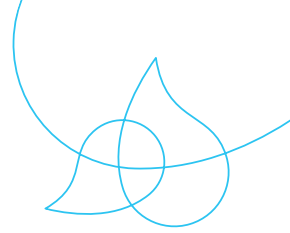
SPECIAL DESIGN: With DIN flange or for mounting on a wall and in a well.

MATERIAL:

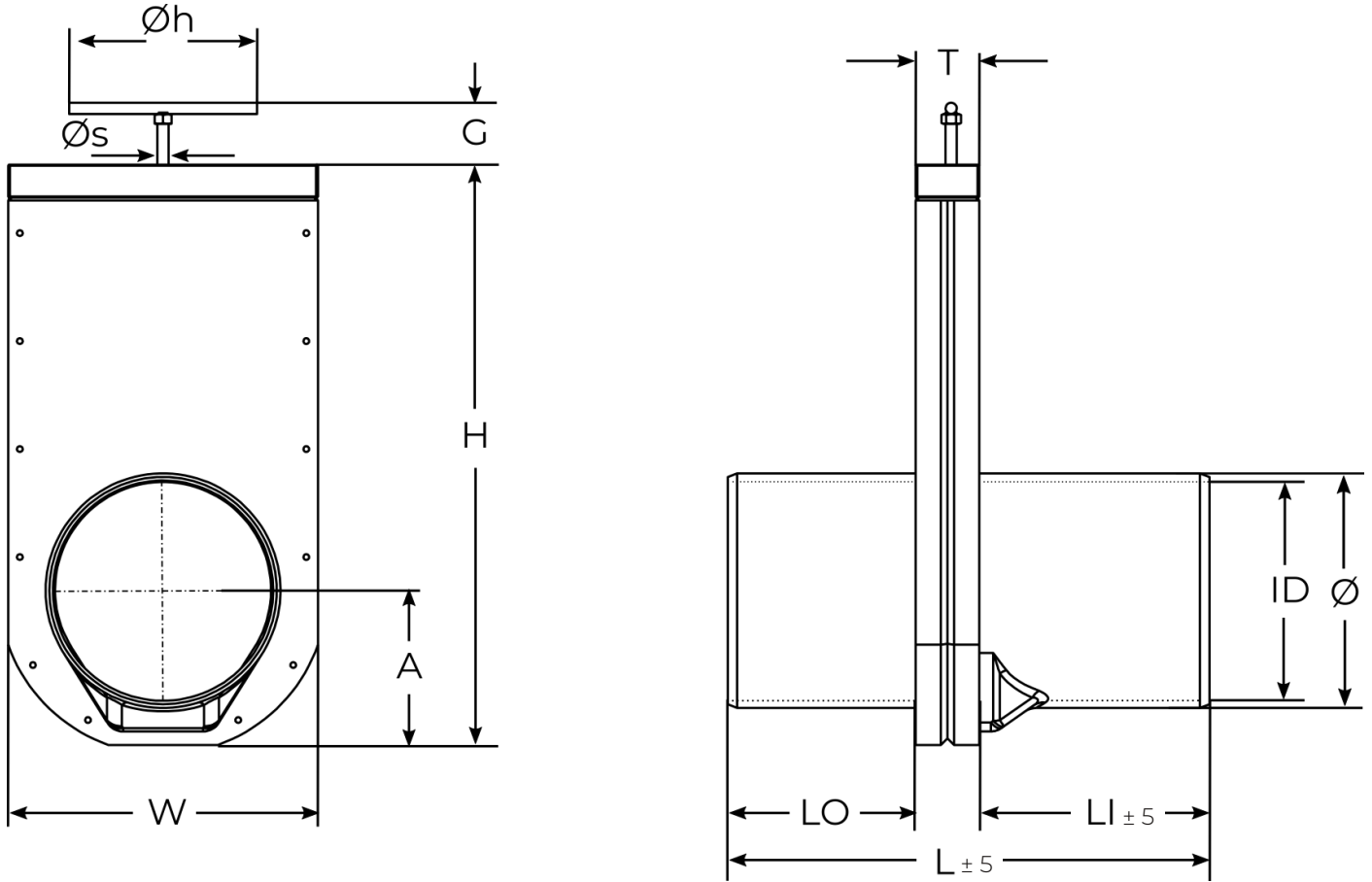
Valve body	PEHD 500
Valve blade and push rod	EN 1.4404, (EN 1.4462)
Valve gasket	EPDM (NBR)
Top gasket	EPDM
Sealing ring	NBR

TECHNICAL DATA:

Maximum pressure	NPS/OD 4-6 – 2 bar
	NPS/OD 8-12– 1 bar
Temperature:	-50° C - +80° C



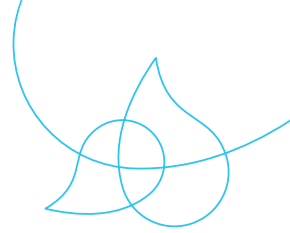
GATE VALVE - SVL DN/OD 4-12



DIMENSIONS IN [INCHES]

NPS/OD	Ø	ID	W	H	A	G	ØS	ØH	L	LO	LI	T	WEIGHT [LBS]	PSI	PIPE
4	110	3.88	7.56	13.46	3.82	2.36	0.47	7.87	16.06	5.51	7.87	2.68	10	29	SDR 17
5	125	4.34	8.19	14.53	4.06	2.36	0.47	7.87	16.06	5.51	7.87	2.68	13	29	SDR 17
6	160	5.81	9.57	17.44	4.80	2.36	0.47	7.87	16.46	5.91	7.87	2.68	17	29	SDR 26
8	200	7.27	11.02	20.40	5.47	2.36	0.47	7.87	17.44	6.89	7.87	2.68	22	15	SDR 26
10	250	9.24	13	24.33	6.46	2.36	0.47	7.87	20.20	7.88	9.65	2.68	29	15	SDR 33
12	315	11.67	11.55	29.37	7.87	2.36	0.47	9.84	26.30	10.87	12	3.07	23.0	1	SDR 33

Other dimensions on request. Reserves the right to changes.



GATE VALVE - SVM-TG NPS/OD 4-25

AREA OF USE: Sewer and stormwater, process water and for the fishing and agricultural industry. SVM-TG is for one-sided pressure.

ADVANTAGES WITH WAGATE SVM-TG:

- Can be connected to the pipeline network with coupling, electric coupling, flanges, or welded together in open terrain
- Is designed with full flow and with a self-cleaning pocket, which ensures total closure of the valve blade
- Long lifespan. Low operating and maintenance cost
- The O-ring seal against the valve blade can be replaced in larger valves
- Can be built into the pipeline inside and outside well systems with spindle extensions and protective tubes in PEH
- The valve is suitable for installation in the ground without any form of protection

OPERATION: SVM-TG has a non-rising spindle and is operated with a handwheel or with an adapter and extension rod.

Can be used with electric, pneumatic, or hydraulic actuators.

SPECIAL DESIGN: With DIN flange or for mounting on a wall and in a chamber.

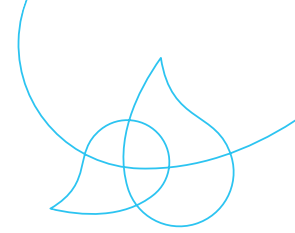


MATERIAL:

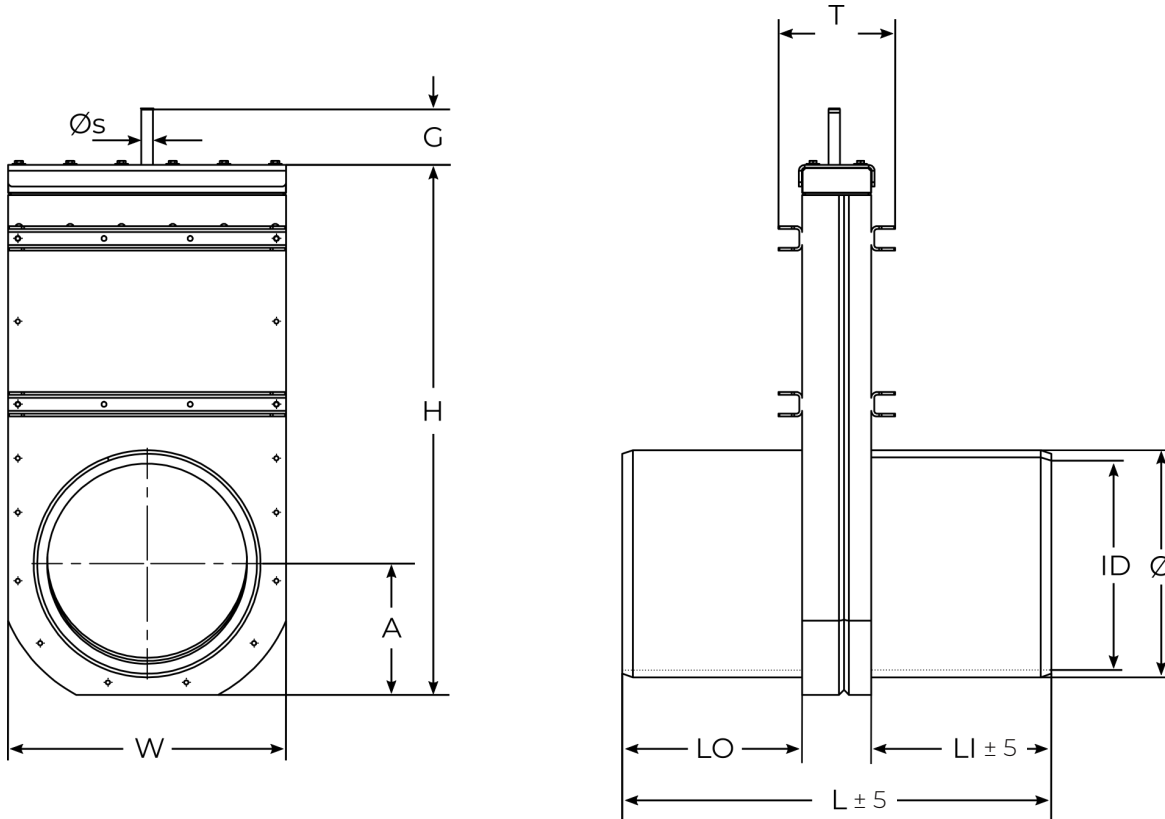
Valve body	PEHD 500
Reinforcement profiles	EN 1.4404, (EN 1.4462)
Valve blade	EN 1.4404, (EN 1.4462)
Spindle	EN 1.4571 (EN 1.4462)
Spindle nut	Tin bronze (Cu2Sn12)
Valve gasket	EPDM (NBR)
Top gasket	EPDM
Bearing:	Nylon
Tätningring	NBR

TECHNICAL DATA:

Maximum pressure	NPS/OD 4-8 – 87 psi
	NPS/OD 10-12 – 58 psi
	NPS/OD 16-25 – 29 psi
Temperature	-50° C - +80° C



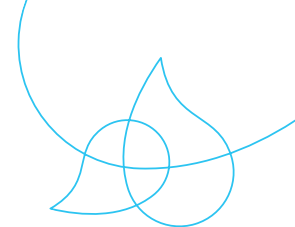
GATE VALVE - SVM-TG NPS/OD 4-25



DIMENSIONS IN [INCHES]

NPS/OD	Ø	ID	W	H	A	G	Øs	L	LO	LI	T	WEIGHT [LBS]	NM	TURNS TO OPEN	PSI	PIPE
4	4.33	3.81	8.11	15.04	3.86	4,21	0.63	14.8	7	7.8	6.38	22	6	31	87	SDR17
5	4.92	4.34	8.66	16.3	4.33	4,21	0.63	14.8	7	7.8	6.38	24	7,5	34	87	SDR17
6	6.3	5.55	9.84	18.90	4.8	4,21	0.63	15.6	7.4	8.19	6.38	31	12,0	42	87	SDR17
8	7.87	6.94	11.22	21.22	5.45	4,21	0.63	15.6	7.4	8.19	6.38	42	19,0	51	87	SDR17
10	9.84	8.68	12.99	25.04	6.22	4,21	0.63	23.46	11.34	12.13	6.38	57	29,0	63	58	SDR17
12	12.4	10.93	15.2	28.94	7.17	4,21	0.63	23.46	11.34	12.13	6.38	82	46,0	76	58	SDR17
16	15.75	14.54	19.13	36.42	8.98	4,21	0.71	31.33	15.28	16.06	6.46	123	27,0	99	29	SDR26
18	17.72	16.36	21.46	40.55	10.2	4,21	0.71	31.33	15.28	16.06	6.46	148	35,0	113	29	SDR26
20	19.69	18.18	23.43	42.8	12.99	4,21	0.71	31.33	15.47	15.87	8.58	196	43,0	125	29	SDR26
22	22.05	20.36	24.8	49.45	330	7,09	0.71	39.21	19.41	19.8	8.98	322	75,0	112	29	SDR26
25	24.8	22.91	28.31	53.15	13.46	7,87	0.98	39.61	19.61	20	8.98	326	95,5	123	29	SDR26

Other dimensions on request. Reserves the right to changes.



GATE VALVE - SVM-TG NPS/OD 28-48

AREA OF USE: Sewer and stormwater, process water and for the fishing and agricultural industry. SVM-TG is for one-sided pressure.

ADVANTAGES WITH WAGATE SVM-TG:

- Can be connected to the pipeline network with coupling, electric coupling, flanges, or welded together in open terrain
- Is designed with full flow and with a self-cleaning pocket, which ensures total closure of the valve blade
- Long lifespan. Low operating and maintenance cost
- The O-ring seal against the valve blade can be replaced in larger valves
- Can be built into the pipeline inside and outside well systems with spindle extensions and protective tubes in PEH
- The valve is suitable for installation in the ground without any form of protection



OPERATION: SVM-TG has a non-rising spindle and is operated with a handwheel or with an adapter and extension rod.

Can be used with electric, pneumatic, or hydraulic actuators.

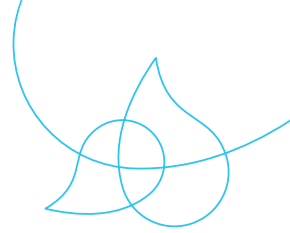
SPECIAL DESIGN: For aggressive media, the spindle/nut is mounted outside the valve body.

MATERIAL:

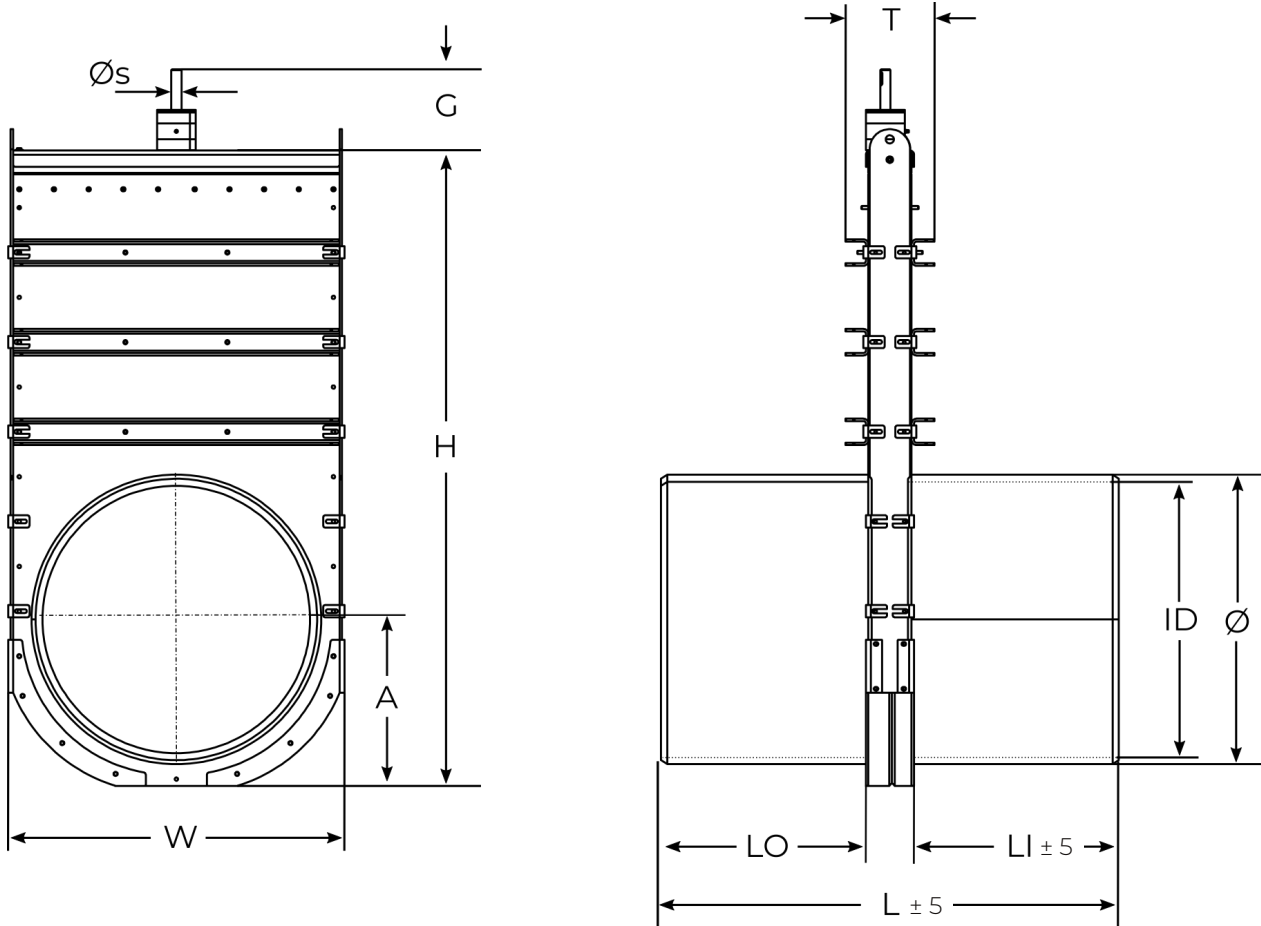
Valve body	PEHD 500
Reinforcement profiles	EN 1.4404, (EN 1.4462)
Valve blade	EN 1.4404, (EN 1.4462)
Spindle	EN 1.4571 (EN 1.4462)
Spindle nut	Tin bronze (Cu2Sn12)
Valve gasket	EPDM (NBR)
Top gasket	EPDM
Bearing:	PEHD 300
Tätningssring	NBR

TECHNICAL DATA:

Maximum pressure	NPS/OD 28-48
	contact us
Temperature	-50° C - +80° C



GATE VALVE - SVM-TG NPS/OD 28-48



DIMENSIONS IN [INCHES]

NPS/OD	Ø	ID	W	H	A	G	ØS	L	LO	LI	T	WEIGHT [LBS]	NM	TURNS TO OPEN	PSI	PIPE
28	27.56	25.81	31.97	61.34	16.06	7,87	0.98	44.17	21.89	22.28	8,27	448	60,5	141	14.5	SDR26
32	31.5	29.09	35.91	69.61	18.9	7,87	0.98	49.06	24.33	24.72	8,27	582	77,0	161	14.5	SDR26
36	35.43	32.72	39.84	76.69	20.47	7,87	0.98	53.86	26.69	27.17	8,27	752	97,0	177	14.5	SDR26
40	39.37	36.36	43.78	85.55	23.62	7,87	1.18	59.45	29.45	30	9,06	1257	70,0	163	7.5	SDR26
48	47.24	43.63	51.65	100.35	27.56	7,87	1.18	67.24	33.39	33.86	9,84	1519	100,0	195	7.5	SDR26

Other dimensions on request. Reserves the right to changes.