

GATE VALVE - RVL DN/OD 110-315

AREA OF USE: Surface water, process water, and clean water projects without major impurities, suitable for fish transport. RVL is for two-sided pressure.

ADVANTAGES WITH WAGATE RVL:

- Designed with two lip O-ring seals for tightness on both sides
- Full flow during the closing function.
- An on/off valve for manual operation with a pull rod, which can be held in the open position
- Can be installed on the pipeline inside and outside well systems with a pull rod and protective pipe that is embedded in the top section
- Suitable for installation in the ground without any form of protection

OPERATION: Manual, Electric actuator, Pneumatics, Hydraulics.

SPECIAL DESIGN: With flange for mounting on the wall and in wells.



MATERIAL:

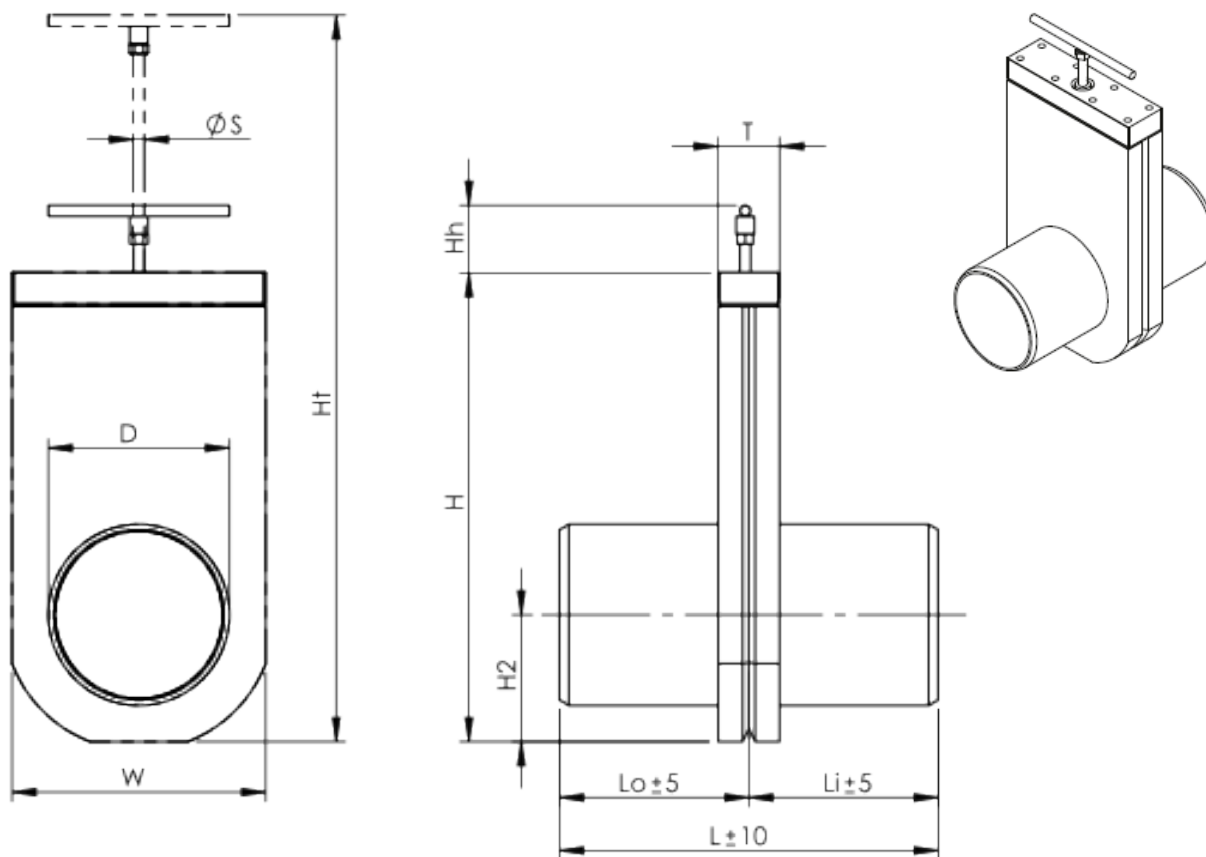
Valve body	PEHD 500
Valve blade and push rod	EN 1.4404, (EN 1.4462)
Valve gasket	EPDM / VITON
Top gasket	EPDM
Sealing ring	NBR

TECHNICAL DATA:

Maximum pressure	DN/OD 110-315 – 1 bar
Temperature	-50° C - +80° C



GATE VALVE - RVL DN/OD 110-315



DIMENSIONS IN [MM]

DN/OD	D	ID	W	H	Hh	ØS	L	LO	LI	T	WEIGHT (KG)	Ht	H2	BAR	PIPE
110	110	96,8	192	341	71	12	348	174	174	68	4,7	536	96	1	SDR17
125	125	110,2	208	369	66	12	348	174	174	68	5,7	573	103	1	SDR17
160	160	147,6	243	443	71	12	368	184	184	68	7,7	687	122	1	SDR26
200	200	184,6	280	518	74	12	418	209	209	68	9,9	802	140	1	SDR26
250	250	234,6	330	618	74	12	468	234	234	68	13,3	952	165	1	SDR33
315	315	295,6	395	746	83	12	628	314	314	78	23	1152	197,5	1	SDR33

Other dimensions on request. Reserves the right to changes.