

GATE VALVES

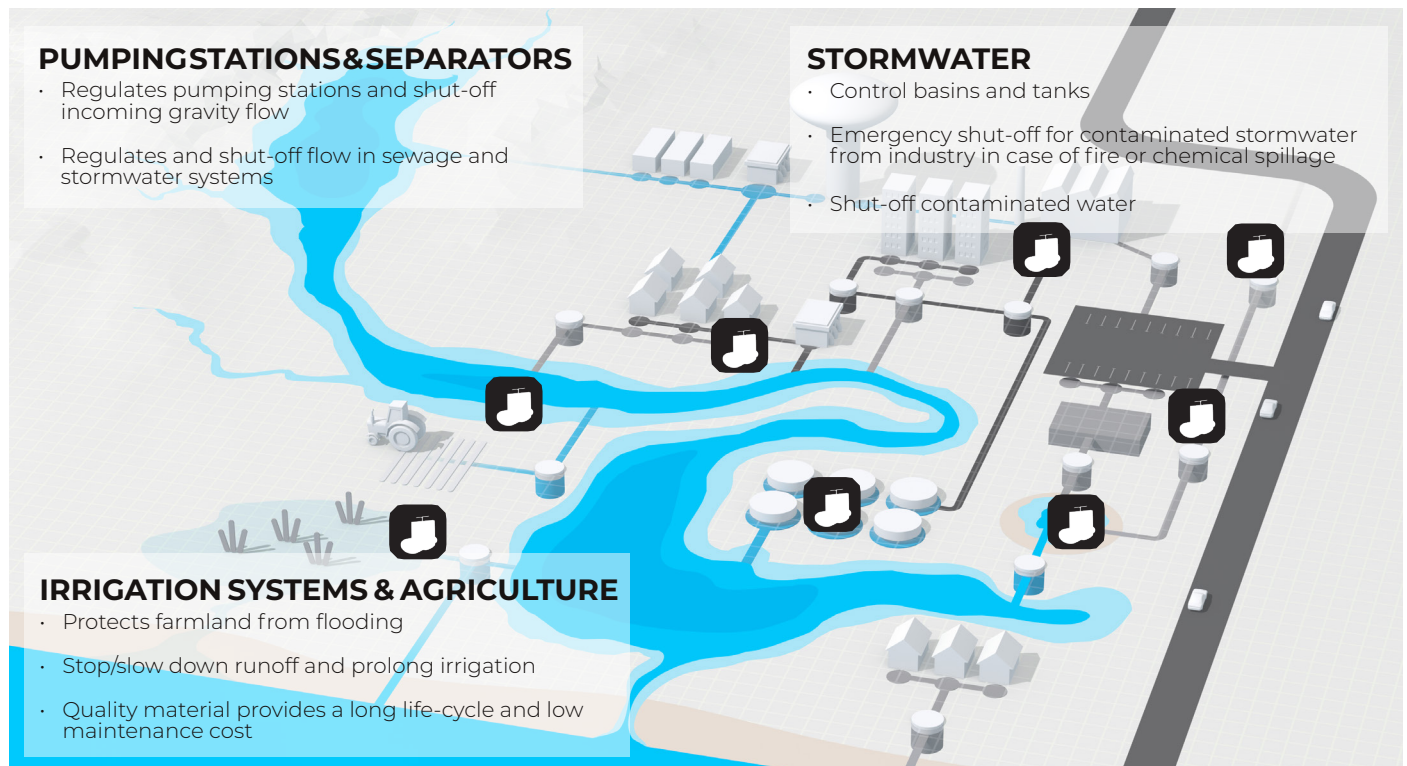
It is devastating if environmentally hazardous substances reach our stormwater, recipients, pastures or water sources. With our solutions you ensure emergency shut-off of roads run-off following an accident or industrial applications. Our solutions can also shut off incoming pipes in pumping stations to facilitate straightforward operational and maintenance work to ensure safety.

Wapro's core competence is stormwater and wastewater technology, and flow regulation in gravity-fed. We offer complete solutions with gate valves, sluice gates, flap valves, shut-off valves, check valves and flow control devices all of which can be adapted to fit existing or new systems.

Our WaGate product range consists of gate valves and sluice gates for flow control with corrosion free and non-polluting HDPE, EPDM and stainless steel. The valves can be customized with electric, pneumatic or hydraulic actuators.



AREA OF USE



WaGate gate valves can be installed inline on stormwater and wastewater networks. The most common applications are to isolate run-off from roads in the case of accidents, or close off incoming flow in pumping stations during maintenance.

Regulations and demands placed on industrial plants require that operators can quickly isolate and shut-off pipe networks in case of contamination. WaGate is the perfect solution in such cases.

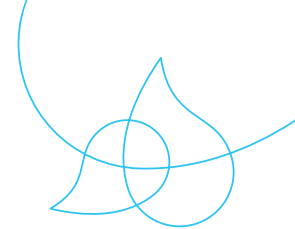
The standard dimension range covers models in sizes DN1000-1200. For larger valves, please contact us.



ADVANTAGES OF WAGATE® GATE VALVES

- Manufactured from the highest quality corrosion-resistant material
- Designed with full flow and with a self-cleaning pocket, which ensures complete closure of the valve blade
- Can be connected to the pipeline network with couplings, electric coupling, flanges, or welded together in open terrain
- Can be easily integrated into pipe networks or installed either in connection to or inside chambers
- Low operation and maintenance cost
- Light weight material saves time and money on heavy lifting equipment to ease installation procedures





IMPROVED MANAGEMENT OF EXTINGUISHING WATER IN HALMSTAD WITH WAGATE GATE VALVE

THE PROBLEM:

A fire training site in Halmstad, Sweden, where both stormwater and extinguishing water need to be managed, required a solution to handle the extinguishing water effectively and safely.

Extinguishing water contains many pollutants and hazardous substances that should not be released into nature, as these substances can cause damage to ecosystems and water sources.

According to the Swedish Environmental Protection Agency (2017), it is important to minimize the amount of extinguishing water released into nature due to its significantly negative impact.

Therefore, it was crucial for the customer to ensure that extinguishing water was not released into nature, causing environmental harm, which we were able to provide a solution for.

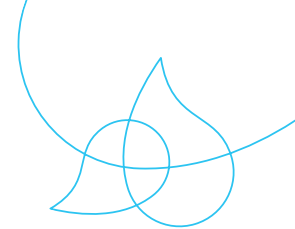


THE SOLUTION:

The solution we provided is a DN1200 plastic chamber with a flowing channel and an integrated gate valve (SVM-TG DN110), allowing the pipeline to be closed and all extinguishing water to be collected in the chamber for easier decontamination.

The chamber is equipped with a flowing channel (i.e., with a gradient towards the channel where the water flows), which allows water to naturally flow down into the channel and out of the chamber during cleaning, for example. The project consisted of four chambers, each with different angles for the inlet and outlet, while also being equipped with a flowing channel. Our colleagues in Technical Support was happy to create a custom-made solution to match the angles and assemble the chamber to meet the customer's needs.

As always, we are grateful to have the opportunity to help our customer in Halmstad with a unique solution that meets their needs and also contributes positively to the environment.

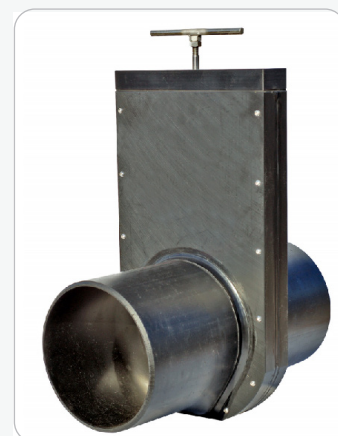


GATE VALVE - SVL DN/OD 110-315

AREA OF USE: Sewer and stormwater, process water and for the fishing and agricultural industry. SVL is for one-sided pressure.

ADVANTAGES WITH WAGATE SVL:

- Manufactured from the highest quality corrosion-resistant material
- Designed with full flow and with a self-cleaning pocket, which ensures complete closure of the valve blade
- Long lifespan. Low operating and maintenance costs
- Simple installation, which reduces costs
- Can be integrated into pipelines or both inside and outside well systems. The valve is suitable for installation in the ground without any form of protection



OPERATION: SVL is an on/off valve for manual operation with a draw rod.

Can be used with electric, pneumatic, or hydraulic actuators.

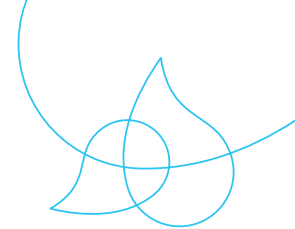
SPECIAL DESIGN: With DIN flange or for mounting on a wall and in a well.

MATERIAL:

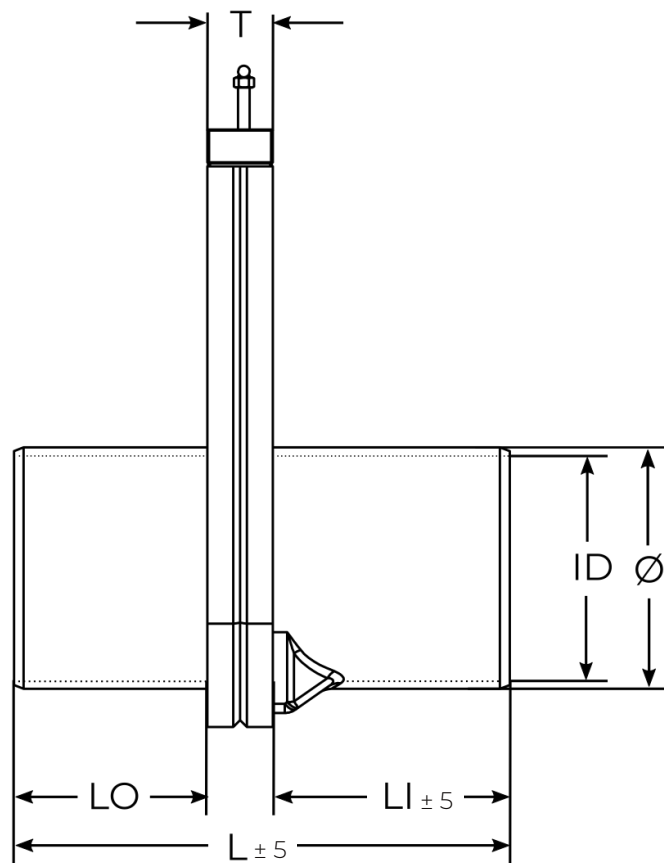
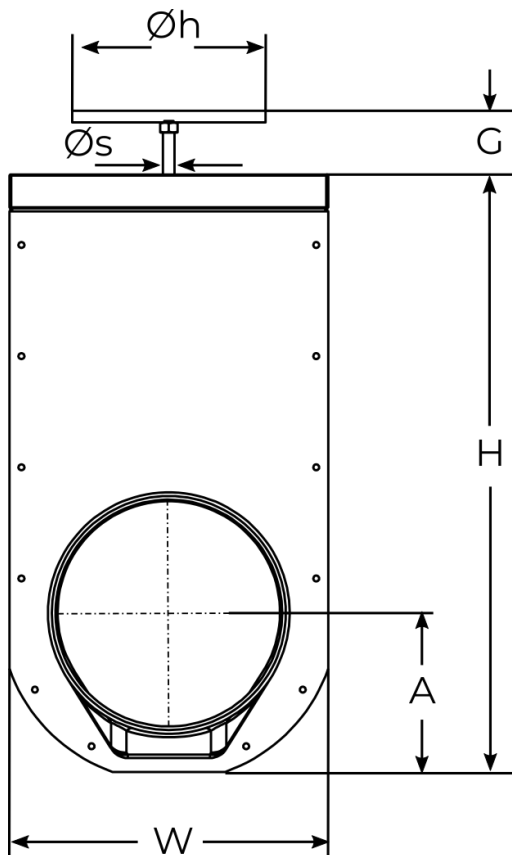
Valve body	PEHD 500
Valve blade and push rod	EN 1.4404, (EN 1.4462)
Valve gasket	EPDM (NBR)
Top gasket	EPDM
Sealing ring	NBR

TECHNICAL DATA:

Maximum pressure	DN/OD 110-160 – 2 bar
	DN/OD 200-315 – 1 bar
Temperature	-50° C - +80° C



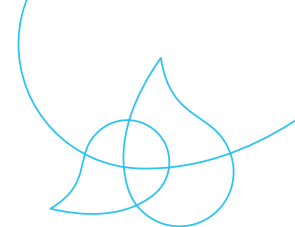
GATE VALVE - SVL DN/OD 110-315



DIMENSIONS IN [MM]

DN/OD	Ø	ID	W	H	A	G	ØS	ØH	L	LO	LI	T	WEIGHT[KG]	BAR	PIPE
110	110	96.8	192	342	97	60	12	200	408	140	200	68	4.7	2	SDR 17
125	125	110.2	208	369	103	60	12	200	408	140	200	68	5.7	2	SDR 17
160	160	147.6	243	443	122	60	12	200	418	150	200	68	7.7	2	SDR 26
200	200	184.6	280	518	139	60	12	200	443	175	200	68	9.9	1	SDR 26
250	250	234.6	330	618	164	60	12	200	513	200	245	68	13.3	1	SDR 33
315	315	295.6	395	746	200	60	12	250	668	275	315	78	23.0	1	SDR 33

Other dimensions on request. Reserves the right to changes.



GATE VALVE - SVM-TG DN/OD 110-315

AREA OF USE: Sewer and stormwater, process water and for the fishing and agricultural industry. SVM-TG is for one-sided pressure.

ADVANTAGES WITH WAGATE SVM-TG:

- Can be connected to the pipeline network with coupling, electric coupling, flanges, or welded together in open terrain
- Is designed with full flow and with a self-cleaning pocket, which ensures total closure of the valve blade
- Long lifespan. Low operating and maintenance cost
- The O-ring seal against the valve blade can be replaced in larger valves
- Can be built into the pipeline inside and outside well systems with spindle extensions and protective tubes in PEH
- The valve is suitable for installation in the ground without any form of protection

OPERATION: SVM-TG has a non-rising spindle and is operated with a handwheel or with an adapter and extension rod.

Can be used with electric, pneumatic, or hydraulic actuators.

SPECIAL DESIGN: With DIN flange or for mounting on a wall and in a chamber.

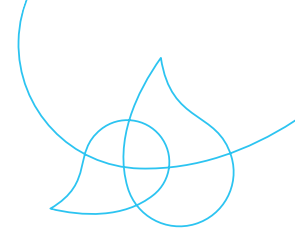


MATERIAL:

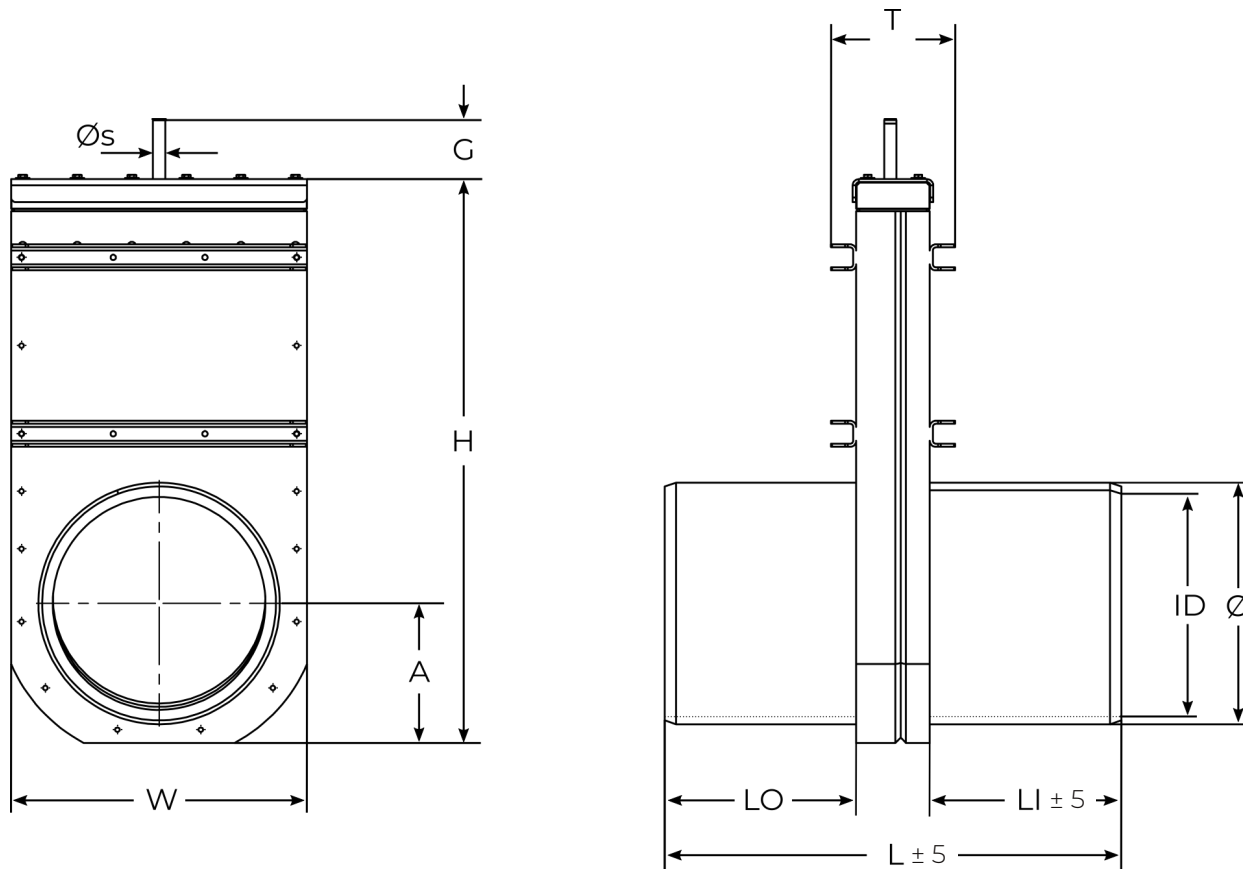
Valve body	PEHD 500
Reinforcement profiles	EN 1.4404, (EN 1.4462)
Valve blade	EN 1.4404, (EN 1.4462)
Spindle	EN 1.4571 (EN 1.4462)
Spindle nut	Tin bronze (Cu2Sn12)
Valve gasket	EPDM (NBR)
Top gasket	EPDM
Bearing	Nylon
Tättningsring	NBR

TECHNICAL DATA:

Maximum pressure	DN/OD 110-200 – 6 bar
	DN/OD 250-315 – 4 bar
	DN/OD 400-630 – 2 bar
Temperature	-50° C - +80° C



GATE VALVE - SVM-TG DN/OD 110-630

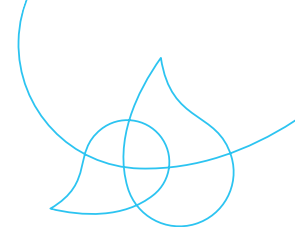


DIMENSIONS IN [MM]

DN/ OD	Ø	ID	W	H	A	G	ØS	L	LO	LI	T	WEIGHT [KG]	NM	URNS TO OPEN	BAR	PIPE
100	110	96.8	206	382	98	107	16	376	178	198	162	10	20,0	31	6	SDR17
125	125	110.2	220	414	110	107	16	376	178	198	162	11	20,0	34	6	SDR17
160	160	141	250	480	122	107	16	396	188	208	162	14	20,0	42	6	SDR17
200	200	176.2	285	539	138	107	16	396	188	208	162	19	20,0	51	6	SDR17
250	250	220.4	330	636	158	107	16	596	288	308	162	26	29,0	63	4	SDR17
315	315	277.6	386	735	182	107	16	596	288	308	162	37	46,0	76	4	SDR17
400	400	369.4	486	925	228	107	18	796	388	408	164	56	27,0	99	2	SDR26
450	450	415.6	545	1030	259	107	18	796	388	408	164	67	35,0	113	2	SDR26
500	500	461.8	595	1087	273	107	18	796	393	403	218	89	43,0	125	2	SDR26
560	560	517.2	630	1256	330	180	25	996	493	503	228	146	75,0	112	2	SDR26
630	630	581.8	719	1350	342	200	25	1006	498	508	228	148	95,5	123	2	SDR26

Other dimensions on request. Reserves the right to changes.

Contact: wapro.com +46 (0)454 185 10 sales@wapro.com
 Contact GB and IE: wapro.com +44 114 308 0123 sales@wapro.com



GATE VALVE - SVM-TG DN/OD 710-1200

AREA OF USE: Sewer and stormwater, process water and for the fishing and agricultural industry. SVM-TG is for one-sided pressure.

ADVANTAGES WITH WAGATE SVM-TG:

- Can be connected to the pipeline network with coupling, electric coupling, flanges, or welded together in open terrain
- Is designed with full flow and with a self-cleaning pocket, which ensures total closure of the valve blade
- Long lifespan. Low operating and maintenance cost
- The O-ring seal against the valve blade can be replaced in larger valves
- Can be built into the pipeline inside and outside well systems with spindle extensions and protective tubes in PEH
- The valve is suitable for installation in the ground without any form of protection



OPERATION: SVM-TG has a non-rising spindle and is operated with a handwheel or with an adapter and extension rod.

Can be used with electric, pneumatic, or hydraulic actuators.

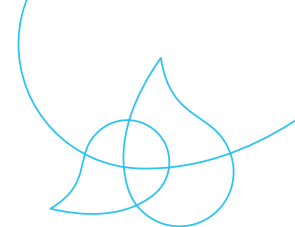
SPECIAL DESIGN: For aggressive media, the spindle/hut is mounted outside the valve body.

MATERIAL:

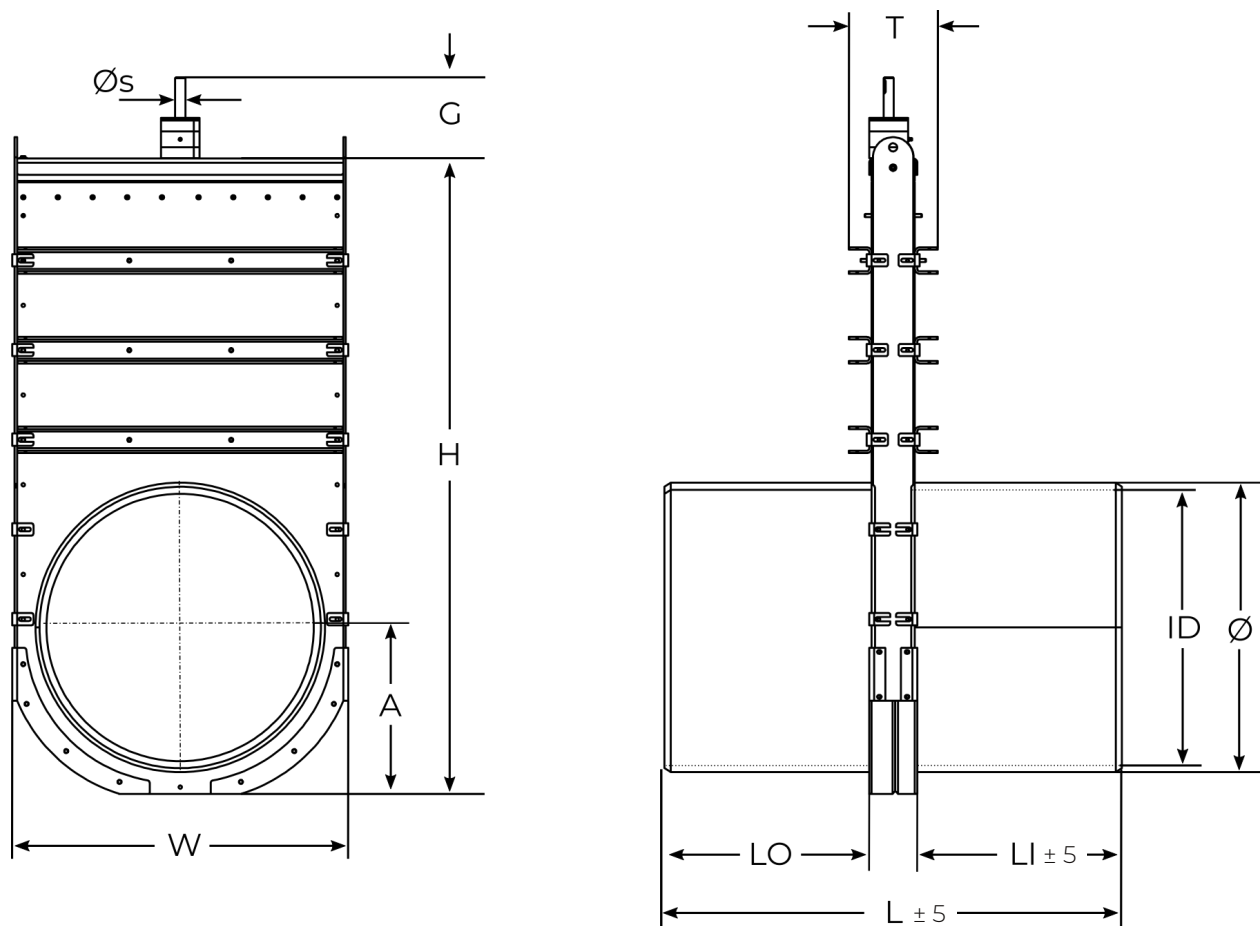
Valve body	PEHD 500
Reinforcement profiles	EN 1.4404, (EN 1.4462)
Valve blade	EN 1.4404, (EN 1.4462)
Spindle	EN 1.4571 (EN 1.4462)
Spindle nut	Tin bronze (Cu2Sn12)
Valve gasket	EPDM (NBR)
Top gasket	EPDM
Bearing	PEHD 300
Tätningssring	NBR

TECHNICAL DATA:

Maximum pressure	DN/OD 710-1200
	contact us
Temperature	-50° C - +80° C



GATE VALVE - SVM-TG DN/OD 710-1200



DIMENSIONS IN [MM]

DN/ OD	Ø	ID	W	H	A	G	ØS	L	LO	LI	T	WEIGHT [KG]	NM	TURNS TO OPEN	BAR	PIPE
710	700	655.6	812	1558	408	200	25	1122	556	566	210	203	60,5	141	1	SDR26
800	800	738.8	912	1768	480	200	25	1246	618	628	210	264	77,0	161	1	SDR26
900	900	831.2	1012	1948	520	200	25	1368	678	690	210	341	97,0	177	1	SDR26
1000	1000	923.6	1112	2173	600	200	30	1510	748	762	230	570	70,0	163	0,5	SDR26
1200	1200	1108.2	1312	2549	700	200	30	1708	848	860	250	689	100,0	195	0,5	SDR26

Other dimensions on request. Reserves the right to changes.